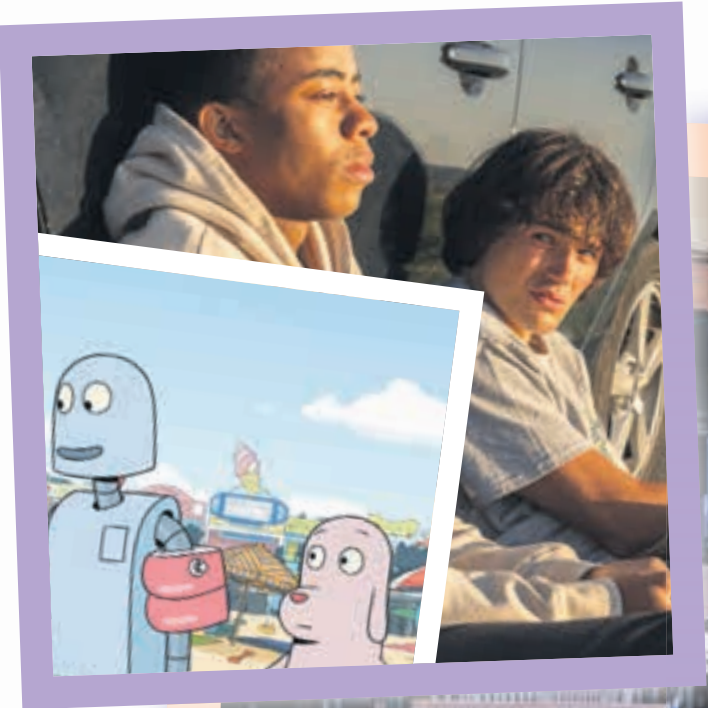
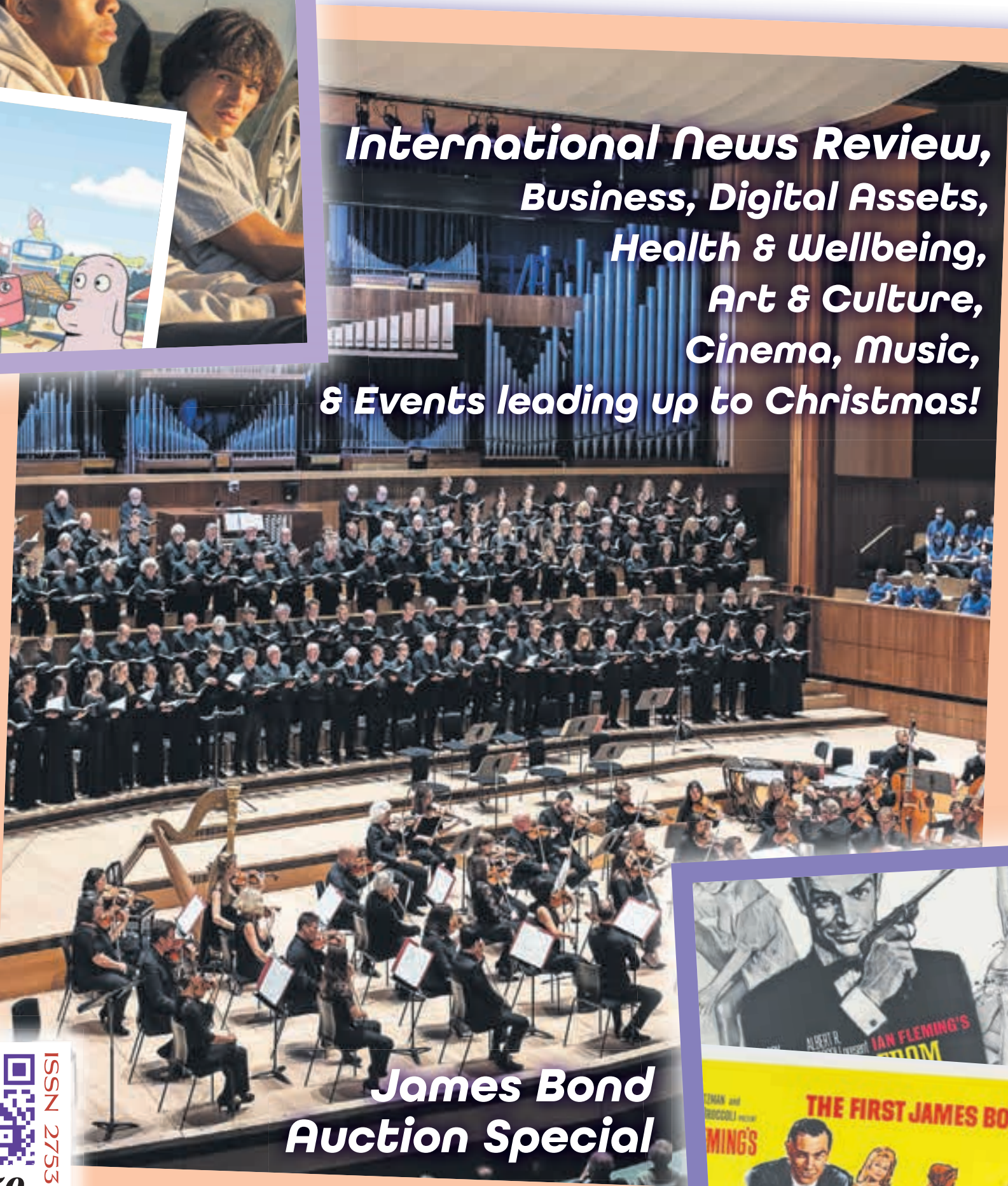


EYE ON LONDON

KENSINGTON & CHELSEA



**International News Review,
Business, Digital Assets,
Health & Wellbeing,
Art & Culture,
Cinema, Music,
& Events leading up to Christmas!**



**James Bond
Auction Special**



£1.50
where
sold

ISSN 2753-8575





Image: Richard Croft

New cycle lane coming to Fulham Road

Fulham Road is getting a new cycle lane painted with dashed white lines indicating traffic flow, and it does not have any physical infrastructure. Cycling improvements follow work to improve safety at the junction of Beaufort Street, Drayton Gardens and Fulham Road with the addition of new pedestrian crossings and advanced stop lines for cyclists on all four arms.

Minor traffic restrictions may be in place as the work is finished over November and some parking bays may be suspended during this time so check for any signposted parking restrictions.

These measures come after a consultation between May and June 2023 found that 71%

of people support or partially the measures in Fulham Road. A similar scheme was also introduced in Kensington High Street earlier this year.

“This new painted cycle lane allows space for everyone who uses our roads as we aim to become a greener, safer and fairer borough,” Cllr Cem Kemahli, lead member planning and public realm, said. “We’ve had a good introduction on Kensington High Street with a similar scheme, where there has been very little impact on traffic. As with any works, there may be some minor disruption while we get the paint on the ground, but the design has been created to strike the right balance between making room for cyclists and keeping Fulham Road moving.”

Nominations have opened for the Royal Borough of Kensington and Chelsea, Mayor’s Awards 2024. The awards are an annual opportunity to celebrate achievements from individuals, as well as groups and organisations that have made outstanding contributions to life in the borough.

This could include residents running initiatives to improve mental and physical health, those serving on community forums to strengthen community safety, and champions of culture and heritage in RBKC.

Nominate someone through the council

website in these categories: Individual Contribution, Young Achiever, Voluntary and Community Sector Organisation. Winners will be selected by a seven-person judging panel comprising councillors including the Mayor of the borough, CEOs of Volunteer Centre Kensington and Chelsea and Kensington and Chelsea Social Council, and the Youth Mayor of the borough.

An award ceremony will be held in the spring of 2024 to celebrate the winners in each category. Nominations will close at 5.00pm on Monday 22th January, 2024.



Nominations open for RBKC Mayor’s Awards 2024



Have your say on the RBKC budget

The council is launching a budget consultation and is asking for your views to help shape its financial priorities for 2024/25. The consultation will go on until the 21st December. Have your say on the draft budget consultation by visiting the Council’s website.

Feedback will be used to set a balanced budget that reflects the needs of the community “by spending wisely, making savings and continuing to deliver value for money for

our residents, businesses and communities.”

Like other councils, Kensington and Chelsea is “facing significant financial pressures” and “there will be difficult choices” as the council looks to “make savings and balance the books.” The rise in the cost of living and inflation have put further strain on families and businesses and so it is important for residents to have their say on the draft proposals to help “create a budget that is balanced and sustainable.”

N

News



Over 10 million free school meals delivered in London

More than 10 million free school meals have already been funded for state primary school children in the capital thanks to “unprecedented support” from the Mayor of London, Sadiq Khan. Free school meals have been provided for up to 287,000 children daily across the capital since the start of the school year in September after the Mayor provided an additional £135 million in emergency funding.

The Mayor is funding an estimated 1.4 million meals every week after stepping in to support families as they struggle with the ongoing cost-of-living crisis. Families in every borough in the capital are saving upwards of £440 per child throughout the school year thanks to this funding.

This is the first time ever that free school meals are available to all pupils in every

year of state-funded primary schools, special schools, and pupil referral units in London. Children in years 3 to 6 in primary school had previously only received free school meals if they lived in households on universal credit earning less than £7,400 a year after tax and excluding benefits, regardless of the number of children in the family

The Lynk up Crew, a group of advisors to the Mayor ranging in ages 7 to 14, hand delivered a letter to Downing Street calling on the Prime Minister to provide permanent universal free school meals for primary school children all over England. The group of 50 young advisers are calling on the Government to ensure every child receives a healthy meal at school every day – helping their health and wellbeing.

TfL works to expand Google Street View

TfL and Google are collaborating to provide Google Street View within a number of stations across London to help customers better plan their journeys. The project uses cameras that capture 360-degree images inside of around thirty tube stations including Green Park, King’s Cross St Pancras and Waterloo, to offer a virtual representation of some of the capital’s busiest stations.

By showing routes through these stations, TfL hopes to ensure that customers can use Google Street View within stations in the same way they would to plan journeys by walking or cycling around London. TfL hopes that this will be especially beneficial to customers with accessibility needs or

those who are unfamiliar with the capital.

Google will start collecting Street View images with posters placed at stations to alert customers when imagery capture may occur. The images will be collected by a small team organised by Google between 10am and 4pm to avoid peak hours. They will make use of 360-degree backpack cameras. Google’s blurring technology will be applied to the images to make sure faces are not published.

The images will be released throughout 2024 and will allow customers to get a better sense of the layout of stations when planning a journey or interchanging between different tube lines, as well as identify key facilities such as toilets and help points.



£5.3 million in funding to reduce air pollution

Boroughs throughout London are being encouraged to apply for a share of £5.3 million in new funding to support ambitious projects that reduce air pollution, protect public health, and make the capital a cleaner and healthier city to live in.

The funding comes as part of a £27 million Air Quality Fund, which has been matched by over £20 million from boroughs and their partners. This fund has already helped local authorities cut air pollution by introducing 25 new clean air routes in some of the capital’s busiest and most polluted

areas. It has reduced pedestrian exposure to air pollution by over 60%.

With the Mayor and Transport for London’s (TfL’s) support, boroughs have already installed and upgraded over 400 electric vehicle chargers, supported 5,300 businesses to reduce their emissions, created over 3,000 square metres of new green spaces, planted more than 250 trees, installed over 1,300 cycle parking spaces, repaired more than 750 bikes, and provided 17,000 pupils with resources and materials around improving air quality.



Women’s	November 22, Tottenham v Bristol City, 19:30
November 18, Chelsea v Liverpool, 13:30	November 23, Chelsea v Paris FC, 20:00
November 19, Crystal Palace v Southampton, 14:00	November 26, Chelsea v Leicester City, 14:00
November 19, Fulham v Arsenal, 14:30	December 10, Arsenal v Chelsea, 12:30
November 22, Crystal Palace v Watford, 19:15	December 10, Tottenham v Man United, 18:45

Men’s	December 7, Tottenham v West Ham, 20:15
November 26, Tottenham v Aston Villa, 14:00	December 6, Crystal Palace v Bournemouth, 19:30
November 27, Fulham v Wolves, 20:00	December 9, Crystal Palace v Liverpool, 12:30
December 2, Arsenal v Wolves, 15:00	December 10, Fulham v West Ham, 14:00
December 3, Chelsea v Brighton, 14:00	December 10, Tottenham v Newcastle, 16:30
December 6, Fulham v Nottingham Forest, 19:30	

N News

Tim Peake may return to space

Tim Peake has suggested plans to come out of retirement, praising plans for an all-UK mission to space. The 51-year-old who in 2016 became the first person from the UK to complete a spacewalk outside the International Space Station, announced his decision to retire from as a European Space Agency astronaut in January of this year.

The UK Space Agency (UKSA) has signed an agreement with an American company that could eventually lead to the first ever all-UK mission to space. The mission would see British astronauts spend two weeks in orbit as they carry out research, test new technology, and take part in education activities.

"I don't think I've ever been in retirement," Major Peake said when asked if he

would come out of retirement to take part. The UKSA deal is "a very exciting development," he told Radio 4's Today programme. "There is a lot happening in the space sector right now and I think for the UK to be at the forefront of this new era of exploring commercial opportunities is a fantastic thing." There are major hurdles before the plan is finalised. These include crew selection and training as well as NASA approval. However, he added, it is encouraging that the UKSA has "started the ball rolling."

British universities and research institutions have been asked to offer ideas for any experiments, which could be carried out in space over the two-week period.

There have only ever been two Britons in space before. Helen Sharman in 1989, and Tim Peake in 2016.



Image: Smithsonian Institution Libraries

Hotel that inspired Dickens at risk

A hotel, which inspired Charles Dickens and hosted The Beatles, has been added to a list of historic sites at risk of neglect, decay, or inappropriate development. Historic England has included 159 sites to its Heritage at Risk Register over the past year. Among them is The Great Horse Hotel in Suffolk.

Over 200 sites have been taken off the register after they were saved. This still leaves a total of 4,871 at risk places, 48 fewer than last year. The register "helped to focus efforts to preserve cherished sites across the country" according to Arts and Heritage Minister, Lord Parkinson. The register provides an annual snapshot of the health of some of the most valued historic buildings and places across England.

The Great White Horse in Suffolk once hosted King George II, Admiral Lord Nelson, and The Beatles. It was also the inspiration for The Pickwick Papers, written by regular guest Charles Dickens.

Holbeche House has also been added to the list. The West Midlands mansion is where the conspirators behind the failed Gunpowder Plot 1605 hid before being caught. The Church of St Mary in Suffolk, painted by landscape artist John Constable, is also at risk, along with Dame John Mound, a popular monument in Kent at risk from erosion.

On the other hand, Holmfirth Conservation Area in West Yorkshire, which featured in Last of the Summer Wine, and Bourn Mill in Cambridgeshire, one of the oldest windmills in England have been taken off the list.

Storm Babet "a sign of things to come"

Storm Babet has left a trail of destruction across landscapes, houses and gardens cared for by the National Trust, throughout the spine of England. The persistent rain that caused rising water levels to rise could have caused as much as tens of thousands of pounds worth of damages, impacting properties across the Midlands and North East of England.

"We know that one of the consequences of climate change will be the frequency of more extreme weather events, and we experienced the direct impact of the prolonged levels of rainfall and high winds on our places last week," Harry Bowell, Head of Land and Nature said. We need to adapt our places to

cope with the likelihood of such extreme weather events, he added, stating that we are already doing so through establishing trees and woodlands, restoring peatlands to hold more water, and through work to reconnect rivers with their floodplains and build new areas of wetlands to help hold water back during heavy and persistent rainfall.

"It is now more important than ever that we play our part to adapt to our changing weather patterns as well as implementing more measures to tackle climate change," he said. "But we also need more urgent and wide-ranging investment and action to address these issues by governments and leaders across the country."



Charting Paths to Peace: Navigating the Israel-Palestine Conflict

Unravelling Seven Decades of Conflict

The recent clash between Israel and Hamas militants, marking yet another chapter in the seven-decade-long conflict, underscores the persistent volatility that has defined the Israel-Palestine relationship. As we delve into the intricate history and current dynamics of this enduring struggle, it becomes evident that the path to resolution is fraught with challenges, rooted in historical grievances, conflicting aspirations, and deep emotional ties.

The Genesis of Conflict

At the core of the Israel-Palestine conflict lies a fundamental dichotomy: Israeli demands for security and Palestinian aspirations for statehood. The seeds of discord were sown in 1947 when the United Nations proposed a partition plan for Palestine. While Jewish leaders accepted, the Arab League rejected it, setting the stage for future tensions. The establishment of the modern state of Israel in 1948 triggered a war that resulted in the displacement of around 700,000 Palestinians, an event remembered by Palestinians as the “Nakba.”

Wars Reshaping Borders

The conflict has witnessed major wars that reshaped the geopolitical landscape of the region. In 1967, the Six-Day War saw Israel launching a preemptive strike, capturing significant territories. The Yom Kippur War in 1973 marked another significant conflict. Israel’s invasion of Lebanon in 1982 and the unilateral withdrawal from Gaza in 2005 added layers of complexity, paving the way for Hamas’s control in 2007. Flare-ups in 2006, 2008, 2012, 2014, and 2021 highlight the persistent volatility.

Peace Efforts and Stalled Diplomacy

Efforts to broker peace have been ongoing but have faced numerous obstacles. In 1979, Egypt and Israel signed a peace treaty, and in 1993, the Oslo Accords were established, providing limited Palestinian autonomy. Despite these attempts, a final peace deal remains elusive. The Arab League’s 2002 plan, offering normalisation in return for a full Israeli withdrawal from 1967 lands, faced challenges, with Hamas’s actions overshadowing the initiative. Peace initiatives have stalled since 2014, with tensions escalating further after the U.S. President Donald Trump’s controversial recognition of Jerusalem as Israel’s capital in 2017, breaking with decades of U.S. policy. The Biden administration has since aimed for a “grand bargain” in the Middle East, encompassing normalisation of relations between Israel and Saudi Arabia. This ambitious diplomatic initiative involves a comprehensive agreement that extends beyond individual components of the conflict. A key aspect of this agreement is the recognition of Israel by Saudi Arabia, contingent on substantial improvements in the conditions of Palestinians in the occupied territories. These improvements include a halt to Jewish settlement building and a commitment never to annex the West Bank.

One-State Solution:

Description: Advocates propose a single, democratic state where Israelis and Palestinians live together with equal rights, addressing concerns about the viability of two separate states.
Challenges: Ensuring equal rights for all citizens, overcoming historical animosities, and determining the political structure of the unified state are major challenges.

Two-State Solution:

Description: This widely discussed and historically endorsed solution envisions the creation of two independent states, Israel and Palestine, coexisting side by side.
Challenges: Contentious issues include defining borders, the status of Jerusalem, the right of return for Palestinian refugees, and security concerns.

Complex Challenges & Critical Questions

Key issues include the elusive two-state solution, the legality of settlements, the status of Jerusalem, agreed borders, and the fate of Palestinian refugees. The two-state solution remains a goal, but issues like demilitarisation pose challenges. Settlements on occupied land are a contentious point, and Jerusalem’s status adds complexity. The fate of 5.6 million Palestinian refugees further complicates the situation, with conflicting demands for the right of return and resettlement.

International Mediation:

Description: Involves the participation of an unbiased international mediator or mediator team to facilitate negotiations and agreements between Israel and Palestine.
Challenges: Finding a mediator acceptable to both parties and ensuring commitment to the proposed solutions.

Incremental Agreements:

Description: Focuses on smaller, interim agreements on specific issues (such as borders, refugees, or security) with the goal of building confidence and trust over time.
Challenges: Ensuring that incremental agreements contribute to a comprehensive and final resolution rather than perpetuating the status quo.

Regional Diplomacy:

Description: Includes engaging neighbouring Arab countries and regional powers to play a constructive role in the peace process.
Challenges: Overcoming historical tensions, conflicting interests, and ensuring the commitment of all regional actors to a peaceful resolution.

People-to-People Initiatives:

Description: Encourages grassroots movements and initiatives that foster dialogue, understanding, and cooperation between Israelis and Palestinians.
Challenges: Overcoming deep-seated prejudices, mistrust, and creating an environment conducive to mutual understanding.

Reconciliation and Transitional Justice:

Description: Addresses historical grievances and injustices through truth and reconciliation commissions, acknowledging past wrongs, and promoting a collective healing process.
Challenges: Balancing the need for accountability with the imperative of moving forward and ensuring the implementation of reconciliation measures.

United Nations Involvement:

Description: Encompasses increased involvement of the United Nations in peace-keeping, monitoring, and enforcing agreements between Israel and Palestine.
Challenges: Ensuring the cooperation of both parties and navigating geopolitical complexities within the UN Security Council.

Economic Cooperation:

Description: Focuses on economic development and cooperation projects benefiting both Israelis and Palestinians, fostering interdependence.
Challenges: Addressing political issues alongside economic initiatives and ensuring the equitable distribution of benefits.

Multilateral Forums:

Description: Utilises multilateral forums, such as the Middle East Quartet, comprising the United Nations, the European Union, the United States, and Russia, to facilitate negotiations and peace efforts.
Challenges: Coordinating the efforts of diverse international actors with varying interests and priorities.

Exploring Options for Peace

DIGITAL ASSETS

NEW LAWS TO COMBAT CRYPTO-RELATED CRIME

Lawmakers in Britain have passed a law that allows authorities to seize as well as freeze any cryptocurrencies that are linked to crime.

The Economic Crime and Corporate Transparency Bill, introduced in September 2022, expanded authorities' ability to crack down on the use of cryptocurrencies in cybercrimes, scams, and drug trafficking. One provision of the bill permits the recovery of crypto assets used in crimes without a conviction, as some individuals may avoid conviction by remaining remote. The law also aims to fight against the use of digital assets "for the purpose of terrorism" or related reasons.

The latest crypto-related legal development in the UK aligns with the government plans to "robustly" regulate cryptocurrencies in order to fight the illicit use and trading of digital assets as part of its economic crime plan by 2026. In March 2023, lawmakers said that they targeted to pass the Economic Crime and Corporate Transparency Bill by the fourth quarter of 2023 along with adopting the Financial Action Task Force's (FATF) Travel Rule.

The FATF is an intergovernmental organisation established in 1989 aiming to combat money laundering, terrorist financing as well as other threats to international

financial systems. Its Travel Rule, known as FATF Recommendation 16, is a set of guidelines written for that purpose. It applies to financial institutions engaged in virtual asset transfers and crypto companies. It mandates that they obtain and disclose precise details regarding the sender and recipient of a virtual asset transfer, either during or before the transaction.

While the transfer of personal data between financial institutions is a long-established process, the Travel Rule is a new requirement as far as the crypto industry is concerned. It requires building an unprecedented communication network between crypto platforms to ensure compliance and fight against money laundering or terrorist financing.

As the UK government has been cracking down on crypto-related crimes, the country has also emerged as a major cryptocurrency economy. A report from blockchain analytics firm Chainalysis in October 2023 found that the UK is the largest crypto country when it comes to raw transaction volume in Central, Northern, and Western Europe. In February 2023, crypto tax platform Recap reported that London was the world's most crypto-ready city for business, followed by Dubai and New York.



"BUY BITCOIN" SEARCHES RISE AS CRYPTO SEES RESURGENCE

Google searches for "buy bitcoin" have risen around the world with the UK alone seeing an increase of over 800% over just a single week. "The remarkable surge in 'buy Bitcoin' searches in the UK, combined with the cryptocurrency's resurgence, underscores the growing interest and potential impact of traditional financial institutions' involvement in the world of digital assets," said a spokesperson from Cryptogambling.tv.

UK users led the pack but there was a noticeable increase worldwide in searches related to purchasing bitcoin. Data from Google Trends found that searches in America for "should I buy bitcoin now" have risen by over 250% in the same period with more niche searches such as "can I buy bitcoin on Fidelity" rising by over 3,100% over the same period. Worldwide, the phrase "is it a good time to buy bitcoin" saw a rise of around 110%.

The sudden rise comes as bitcoin's price saw a drastic increase in October. Its value had briefly risen to around \$35,000 on the 24th October, the first time since May 2022. At the time of writing, bitcoin has gained more than 27% according to data from TradingView.

Despite this, the cryptocurrency's price has proven to be volatile over the past few years. Its current value is still below a

record high of almost \$69,000 in November 2021. There are concerns raised over the environmental impact as well as the potential losses suffered by investors. Earlier this year, the cross-party Treasury Committee of MPs called on the government to treat crypto trading and speculation as a form of gambling. This came amid concerns over a lack of regulation in the sector.

Activity on the bitcoin blockchain still appears to have a pessimistic outlook according to analysts from ByteTree. Transaction numbers had halved in a month and the bitcoin network's economic throughput appeared to be trending downwards, ByteTree's Shehriyar Ali and Seran Dalvi pointed out. "This means that the price is driven solely by the anticipation of positive news, which is not necessarily healthy for the short term," they said.

"The value of crypto," writes Adam Levy on The Motley Fool, "is determined by supply and demand, just like anything else that people want."

"Generally speaking," he added, "investors like stable governance. Even if there are flaws in the way a cryptocurrency operates, investors prefer the devil they know to the devil they don't. As such, stable governance where things are relatively hard to change can be of value by providing more stable pricing."





'Unlucky' number 13 devalues house by £5,000



Image: Donald Trung Quoc Don

When it comes to having a front door number, superstition has resulted in the number 13 being less desirable. The result could mean savings for sceptics as seeking out homes with the 'unlucky' number on it could prove to be a bargain.

Rightmove looked at how estate agents valued over 10 million properties across the UK. It found that between doors numbered 1 through 100, those numbered 13 came in with the lowest average value. The average price for a number 13 property is £354,793, more than £5,000 below the £360,126 average for the sample.

"The majority of buyers are unlikely to be put off being the owner of a number 13 home," Rightmove property expert, Tim Bannister, says, "but it's interesting to see that there does appear to be pockets of the UK that are more on the more superstitious side. Owners of number 13 properties may find that it adds a unique aspect to their home, and it could even be a conversation starter with the next owner when the time comes to sell."

In contrast, door number 1 had the highest value, being £40,000 more than others. Some streets and developments also go as far as to skip the number 13 altogether. You

could find double the number of houses with the number 14 compared with its 'unlucky' neighbour.

"It's common for new developments to skip number 13, going straight from 12 to 14, to remove the element of superstition," Edward Thomson, Director at Strutt & Parker, Sloane Street, says. "Whilst thankfully it is only a very small minority of buyers that are disaffected in this way, there will always be those who avoid 13, never walk under ladders, and salute every magpie! If living at number 13 doesn't faze you it is possible you could find yourself buying against a smaller proportion of the market and therefore do a better deal – but only if you're lucky of course!"

House prices as a whole dropped 5.3% in 2023 up to August, figures from Nationwide found. The bigger-than-expected drop in value means that the average property is now worth £14,600 less than it was a year ago, being priced at £259,153.

This could mean good news for first-time buyers but the benefit could be wiped out by high mortgage rates. Activity in the housing market is still below the pre-pandemic levels, with recent mortgage approvals being 20% lower than the 2019 average.

The average buyer looks for their next home 3.9 miles down the road. However, there is a north-south divide as those in the south are more likely to look further away. In general, Brits don't look too far out for their next home, thinking local first, and searching in areas that are known.

Expanding your search to a wider area could open up more affordable options or help in finding a bigger property. Data from Zoopla finds that the average buyer is looking for a home around 3.9 miles down the road. Three quarters of people were found to only enquire about homes in one or two neighbourhoods. In 2021, the distance between someone's home and a property they enquired about was slightly higher at 4.4 miles.

Over the pandemic, many households were open to a change in lifestyles. As markets became more competitive, buying further away became a useful tactic, helping people find a place that was within their budget as prices rose. Before that, in the summer of 2019, buyers only looked at places an average of 3.7 miles away. Now however, there are many more properties on sale across the country, creating a greater choice locally and supporting people who want to look closer.

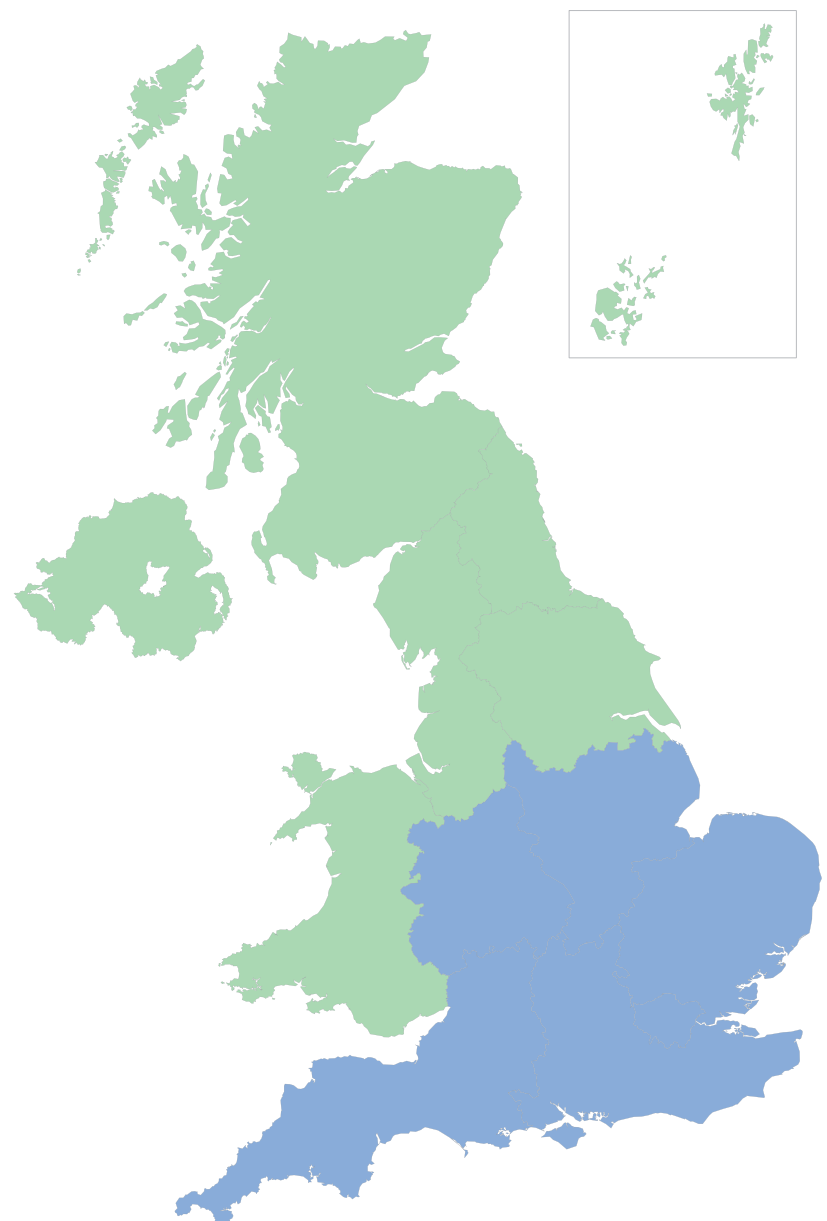
The data also shows regional differences. Half of buyers in the east of England and 43% of those in the South-East looked for a home 10 miles away or even further, being more open to moving to a town down the road or the other side of a city. Buyers in the North and the Midlands on the other hand looked more local. 60% of buyers there searched within a five mile radius, more than the national average of 50%.

This trend mirrors pre-pandemic patterns, suggesting that distance is inherent in moving decisions for southern buyers. This could be because of different local economies or the availability of different types of properties, as well as how expensive certain areas are.

At the height of the pandemic moving boom, headlines reported a "mass exodus" from the capital. Zoopla's data shows that the proportion of buyers in London looking 20 miles or further has risen from 18% in summer 2019 to 24% in summer 2021. "This is a meaningful change," Zoopla says, "but not enough to call it a mass exodus."

Now, Londoners are looking close to home but a third of demand in the capital is for a place at least 10 miles away. Unaffordability and a lack of houses in inner London are both helping to push buyers further away.

Southerners look further while Northerners stay local



THE BOTTOM LINE by Doug Shanks

HMRC ENQUIRIES: THEORY X AND PERSECUTION

In conversation with Speer, Hitler resented British productivity bemoaning what you could inspire people to do in a democracy. Similarly Guardian-reading tofu-munching wokerati (to which I aspire) accountants observe that the less heavy-handed approach (e.g. Liechtenstein Disclosure Facility) supports the view that honey catches more than vinegar. The LDF was seen as excessively generous and increasingly populist governments responded to a perhaps understandable desire for retribution. The various disclosure facilities have been examined in these pages and the specialist firms have useful information on their websites. The government's own website isn't bad.

For small business owners, dealing with His Majesty's Revenue and Customs' enquiries is daunting. It's crucial to understand the process and navigate it effectively. What are the key aspects of HMRC enquiries? What triggers them and how to protect your business during the process?

HMRC can initiate a tax enquiry for various reasons. While some enquiries may seem random, others result from specific red flags. Factors include:

Mistakes and Inconsistencies. Errors or inconsistencies in your tax returns can raise concerns. It's crucial to review your returns for accuracy before submission.

Unusual Financial Performance. If your business's results deviate from industry standards or historical data, be prepared to explain any anomalies.

Large Yearly Changes. Unexplained shifts in income or expenditure triggers suspicion. Document your reasons.

Low Proprietor Drawings. Minimal drawings will raise questions. Ensure you record how you fund personal expenses.

Business Type. Certain business types, like cash-based operations, are more susceptible to scrutiny.

VAT Returns: Claims for VAT repayments that seem inconsistent with your business activities can trigger enquiries.

HOW DOES A TAX ENQUIRY WORK?

A tax enquiry typically begins with a letter from HMRC informing you of the investigation. The letter may not provide specific reasons for the enquiry. HMRC officials are human. There are two primary types of enquiries:

Aspect Enquiries. These are focused investigations that target specific items in your tax return. They tend to be more technical and precise. Prepare to provide detailed explanations for the items under scrutiny.

Full Enquiries. A full enquiry indicates broader concerns by HMRC regarding your entire tax return. In such cases, HMRC will request access to all your business records for the year under review. This can be more comprehensive and time-consuming.

HOW LONG DOES A TAX ENQUIRY TAKE?

It's essential to respond promptly to achieve momentum towards completion. The duration of a tax enquiry can vary significantly based on several factors:

Scope of the Enquiry. The more extensive the investigation, the longer it may

take.

Volume of Information. If HMRC needs to review a substantial amount of data, it can extend the enquiry timeline.

Specific Tax Matters. The complexity of the tax issues being investigated can impact the duration.

Size and Complexity of Your Business. Larger and more complex businesses may have lengthier enquiries.

On average, full enquiries last around 18 months, while aspect enquiries may conclude within six months. Complex cases can extend the timeframe significantly. We are seeing enquiries taking longer perhaps because the inspectors' resources are under pressure.

WHAT HAPPENS AT THE END OF ENQUIRY PROCEEDINGS?

At the conclusion of an enquiry, HMRC will arrive at one of two outcomes:

No Adjustments Required: If HMRC is satisfied that your original self-assessment return was accurate, the enquiry will conclude without further action. You can breathe a sigh of relief in this scenario.

Adjustments Necessary: If errors or omissions are identified, adjustments will be made to your self-assessment. You will have 30 days to appeal this decision. Be prepared to address any changes required and consider seeking professional advice.

The size and nature of adjustments can vary. Significant changes may lead HMRC to review other tax years as well. Penalties and interest may apply if errors were made.

HOW TO STAY ORGANISED DURING AN ENQUIRY

Being organised during a tax enquiry is crucial to simplify the process and minimise the risk of errors. Here are some steps to help you stay organised:

Keep your financial records well-organised and easily accessible. This includes bank statements, invoices, receipts, and payroll records.

Maintain separate personal and business bank accounts to protect your privacy and simplify record-keeping.

Respond promptly to HMRC requests for information and documents. Timely cooperation can prevent unnecessary delays.

Consider seeking professional advice and representation, especially during complex enquiries. Experienced professionals can guide you through the process effectively.

HOW TO PROTECT YOUR BUSINESS

While you can't guarantee immunity from tax enquiries, you can take proactive steps to protect your business:

Plan ahead and submit your tax returns accurately and on time. Avoid last-minute submissions that may lead to errors.

Keep meticulous records and declare all income and expenses. Transparency is essential in demonstrating compliance.

Be prepared to explain any significant changes in your finances. Maintain documentation that supports these changes.

Include the possibility of a tax enquiry in your business continuity plan. Having a strategy in place can help you navigate the process more effectively.

With proper preparation, organisation, transparency, and the support of tax professionals, you can navigate the process more smoothly and safeguard your business's financial well-being. Remember that seeking professional advice is a prudent step to ensure the best possible outcome during a tax enquiry. It can make a significant difference in protecting your business' interests and minimising potential penalties.

WHEN IT GOES WRONG

Taxpayers trying to control the outcome by spinning, obfuscating or even lying as a major risk. HMRC has "foresuffered all enacted on this same divan or bed." Your angle may be new to you but won't be to them. A business owner may feel they "have

paid enough tax" or that their business is a special case effectively reinventing tax law as part of their defence, or that somehow because an issue hasn't specifically been raised at the start it will stay hidden. You will hear that HMRC are not allowed to fish. Forget it. Technically fishing is not allowed in some arcane circumstances but for the vast majority (effectively all) enquiries HMRC can fish in whatever waters it likes.

Enquiries are hell. Rarely will one inspector be on the case throughout so you'll find yourself being cross-examined by a second or even a third officer. Stay in the day. Seek independent advice especially if you are an accountant yourself. Answer questions fully but precisely. Don't spin. If you have something to hide, reach for the Contractual Disclosure Facility, a relatively generous ladder down which you can climb.

Stay calm. If you lose your rag with the inspector you'll find you're racing a Riva on a pedalo.

© Doug Shanks

douglas@dscmetropolitan.com



Image: Matthew Hopkins, Witchfinder general, courtesy of Wellcome Trust. Ref: ICV 26321, image no: V0025871



EyeOnLondon's choice of top tranquil treats for Christmas

7 must visit Luxury Spas in London

It can be easy to get stressed and overwhelmed. That's why it's important to take some time for yourself to relax and recharge, and what better way to do that than with a visit to one of London's many world-class spas?

Whether you're looking for a day of pampering or a longer retreat to focus on your health and well-being, there's a spa in London that's perfect for you. With so many spas to choose from, it can be hard to know where to start.

Here are some of the best spas in London that offer a variety of services to help you relax and improve your health.

The Hogarth Health Club

The Hogarth is a family owned adults-only health club set across 2 leafy acres in the heart of Chiswick. Tucked away just off the high road, The Hogarth has offered a full wellness lifestyle through exercise, nutrition and relaxation for over 40 years. The club boasts a multi-room gymnasium, tennis and squash courts, personal training, swimming and spas, and more. What's more, there are over 100 weekly studio classes including aerobics and yoga. The 18m indoor swimming pool is heated to "the perfect temperature to relax in." Airedale Ave, Chiswick W4 2NW thehogarth.co.uk

7 Sky Spa

This "fusion of modern innovations in the field of cosmetology and centuries of massage culture from Thailand and Bali" helps offer a very unique and unforgettable experience. Living in a big city such as London can be stressful and it is vital to take some time for some self-care for both the mind and body. Here, you can expect a calming and relaxing atmosphere combined with a premium service with complimentary drinks, light bites, and top-level spa treatments.

11-12 Newman Street W1T 1PB
7skyspa.co.uk

The Ned Spa

Ned's Club Spa offers a variety of relaxing treatments, from manicures and pedicures, to advanced facials, massages and hair services. The spa also boasts a swimming pool, sauna, and steam room. Book in for treatments from the signature massages and maternity treatments, to advanced facials with Dermalux LED Phototherapy, iS Clinical, and de Mamiel. Or try the traditional Moroccan hammam with specialist treatments from La Sultane de Saba. Meanwhile, The Ned's resident physiotherapist and osteopath are available to treat and prevent injuries.

27 Poultry EC2R 8AJ
thened.com

The Lanesborough Club & Spa

Located at The Lanesborough London, this is a luxurious spa that offers a wide range of treatments, including massages, facials, body wraps, and more. The spa also has a swimming pool, sauna, steam room, and jacuzzi. Crowned 'Best Spa in London' at the Good Spa Awards 2022 and 'Best for Five Star Service' at The Tatler Gym Awards 2023, The Lanesborough Club & Spa, perfectly positioned between Knightsbridge and Mayfair, is one of London's most exclusive private members' fitness and health clubs and spa, offering members and hotel guests access to internationally recognised experts in the fields of mindfulness, fitness, beauty and wellness - with a 360° approach to wellbeing.

2 Lanesborough Place SW1X 7TA
lanesboroughclubandspa.com

Aman Spa at The Connaught

Hidden away at the heart of The Connaught lies Aman Spa at The Connaught, the very first Aman Spa to be built outside the world-renowned Aman resorts. Take a journey of discovery and reconnect mind, body and spirit, guided by experienced Aman therapists. You will find holistic massages, body treatments and healing therapies transport you into Aman Spa's world of relaxation. Specialised therapies help you find balance, while beauty services provide the perfect finishing touch. Become a member of Aman Spa, for easy access to the spa, pool and gym along with discounts and other benefits.

The Connaught, 16 Carlos Place W1K 2AL
the-connaught.co.uk

AIRE Ancient Baths

Prepare for an unforgettable experience, with water as your guide and relaxation as your destination in a historic building located in the heart of Covent Garden. The silence, the dim lights of thousands of candles, the scent of orange blossom, the murmur of relaxing melodies that can be heard even underwater are the key elements of the AIRE Experience. These iconic thermal baths will allow you to free and relax your mind and body while massages and rituals, created to dissipate the stress of everyday life, will bring you to a complete state of serenity.

2-3 Robert Street WC2N 6BH
beaire.com

Lush Spa

Lush Spa in Oxford Street is a unique spa experience that uses fresh, handmade products from the Lush cosmetics brand. The spa offers a variety of treatments, including massages, facials, body wraps, and hair treatments. Each treatment is designed to be relaxing and rejuvenating, and uses fresh, natural ingredients. The spa is located in the heart of London's Oxford Street, making it easy to get to and from. The spa itself is a tranquil oasis, with soft lighting, calming music, and a welcoming atmosphere. When you arrive at Lush Spa, you will be greeted by a therapist who will take you on a tour of the spa and discuss your needs. You will then be able to choose from a variety of treatments. In addition to treatments, Lush Spa also offers a variety of products that you can purchase to use at home, including bath bombs, soaps, lotions, and more.

175-179 Oxford Street W1D 2JS
lush.com

Education

Enquiring Minds

Adult Education Courses



Language

Turkish

King's College London

Turkish is the major member of the Turkic language family, which is a subfamily of the Altaic languages. Turkish is spoken in Turkey, Cyprus, and elsewhere in Europe and the Middle East. Modern Turkish is the descendant of Ottoman Turkish and its predecessor, so-called Old Anatolian Turkish, which was introduced into Anatolia by the Seljuq Turks in the late 11th century AD. Old Turkish gradually absorbed a great many Arabic and Persian words and even grammatical forms and was written in Arabic script. After the founding of the Turkish republic in 1923, the Arabic script was replaced by the Latin alphabet (1928). The reform of the language was initiated and supported by the Turkish republican government. Evening class students are invited to participate in the communicative, interactive tasks and receive additional support for Grammar and Vocabulary.

Strand WC2R 2LS

kcl.ac.uk

See website for dates

Science, Technology, Engineering, & Maths

Accounting course

Westminster Adult Education Services

WAES' accounting qualifications are awarded by the AAT (Association of Accounting Technicians), the UK's leading body for accounting staff, and are widely recognised by employers. The courses build from the basics to higher levels, covering the skills and knowledge you need to start your career in finance and accounting. Studying for these qualifications will improve your job prospects, enhance your CV and get you noticed by potential employers. The range of Online and In Class part-time professional courses offers the best of both worlds, requiring less time in class than traditional classroom-only courses, while providing all the benefits of being part of a group that meets regularly with a tutor. Meaning you can choose how, when and where you want to study.

219 Lisson Grove NW8 8LW

waes.ac.uk

See website for dates

Sport & Fitness

Novice Driver Training Course

Silverstone

Created and launched at Silverstone, in the early nineties, the Novice Driver Training Course (NDTC/ARDS) was developed from a need to improve the skill, safety, and understanding of novice drivers taking their first steps into the world of motorsport. Head of Race Training, Steve Deeks, was heavily involved in making the NDTC vision a reality, with involvement in the course design, training materials, and exam content. Meaning when you choose to take your NDTC course with us, you're in the hands of experts. Over the last 30 years, tens of thousands of successful competition licence holders have taken to the track. Silverstone gives novice drivers the guidance they need to start the engine on their track careers.

Hilton Garden Inn, Silverstone Circuit,

Towcester, NN12 8TL

silverstone.co.uk

See website for dates

Arts

Drawing

London Fine Art Studios

Drawing is the cornerstone of painting and the foundation of an artist's training. At the studios, we place great emphasis on drawing as an essential part of every artist's formal training. Those who have completed the Foundation Course will continue to develop their draughting technique in our specialist Cast Drawing Studio. Projects last 2/3 weeks with thorough exploration of outline, shadow line, mass in the shadow, mass in the background, middle tones and modelling up to the lights. Students will develop a thorough understanding of the medium, the support and its potential.

Unit 101, Battersea Business Centre,

99-109 Lavender Hill SW11 5QL

londonfineartstudios.com

See website for dates

Business & Law

Introduction to Diamonds

City Lit

The fascinating one-day course will give you an insight into the trade in diamonds and the different types of diamond available on the market. It will introduce you to the diamond simulants that are commonly found, and teach you how to assess diamonds yourself. There will be various images of diamonds and diamond-set jewellery for you to view. The course will cover the mining, cutting, grading/pricing of diamonds and their certification. Topics will include the economics of diamonds including the structure of de Beers and the diamond-producing countries. You will also look at the common diamond simulants that can be found in jewellery and be taught how to use a loupe, and guided through the assessment criteria in certifying a diamond.

citylit.ac.uk

December 2

Culinary

Italian Cooking Class

The Avenue

Ciao fellow Italian cuisine fans! Do you miss your Italy trip and the divine dishes? Or perhaps you haven't had the pleasure yet and just want to feel like you are in Italy – well, look no further because this Italian Cooking Class will have you whipping up some classic Italian dishes in no time. Your evening will be helped along with bottomless wine and, in true Italian style, an Aperol Spritz on arrival. What more could you want!? The class will start off with a welcome Aperol, and then you will get to sit down and be blown away by a fun and informative demonstration of everything you will be cooking during the class. Having had your mind blown with how simple these classic dishes can be, alongside some foodie facts, you get to head to get your hands dirty and get your cook on! From fresh pasta to gnocchi and creamy risotto you'll be tempted to join all 3!

3 Enterprise Way, Wandsworth SW18 1FZ

theavenuecookeryschool.com

See website for dates

Compiled & edited by Fahad Redha



What, When, Where? November - December '23

DANCE & OPERA

Don Quixote

Royal Opera House

Teeming with comedy, wit and an abundance of bravura choreography, Carlos Acosta's production brings the Spanish heat and romance of Cervantes' classic novel to life. Don Quixote reads a book of adventures and becomes deluded, believing that he is the successor of the mediaeval knights-errant, on a quest to serve his imaginary Lady, Dulcinea. He sets out with Sancho Panza. They meet Kitri, who is in love with Basilio, a poor barber. Her father Lorenzo wishes her to marry the foppish nobleman Gamache. Kitri and Basilio run away together to get married. Lorenzo and Gamache set out in pursuit, followed by Don Quixote and Sancho Panza.

Bow Street WC2E 9DD

roh.org.uk

Until November 17

The Snowman

The Peacock

This winter family favourite is the timeless tale of a boy and a snowman who comes to life. Back for its 26th year, The Snowman is a magical stage adaptation of the much-loved picture book by Raymond Briggs and the film directed by Dianne Jackson. The Snowman is directed by Bill Alexander and features music and lyrics by Howard Blake, including the song 'Walking in the Air', spectacular design by Ruari Murchison, magical lighting by Tim Mitchell, and amazing choreography by Robert North, all of which is accompanied by a live orchestra. Portugal Street WC2A 2HT

sadlerswells.com

November 18 - December 30

Young Associates: Mixed Bill

Lilian Baylis Studio

The 2023/24 Young Associates share their work in a mixed bill, each showcasing their distinct and diverse creative voice as they take the next step in their careers as choreographers. Over two years these exciting and important artists will develop their craft, presenting their work in the Lilian Baylis Studio, and then at our new venue Sadler's Wells East in Autumn 2024. The Young Associates programme helps talented dance artists aged 18-24 and 18-30 for d/Deaf and disabled choreographers, giving them a crucial first step in their careers.

183 Rosebery Avenue EC1R 4TJ

sadlerswells.com

November 22-23

Christmas with Opera Holland Park

Holland Park

Mark the beginning of the festive period at St Mary Abbots Church on Kensington Church Street. Featuring the Opera Holland Park Chorus and principal singers from the 2024 Season, this Christmas celebration will be filled with carols, seasonal music and good cheer. Priority booking for Members and Supporters opens at 10am on 4 October, and general booking opens at

Winter Wonderland

Hyde Park

From high adrenaline rides to family-friendly performances, classic festive treats to the newest in London's street food scene, and cosy fire pit bars to mythical ice kingdoms – we guarantee there's something for everyone. Make the most of your festive season in true Winter Wonderland style! The event will be open from 10:00am to 10:00pm daily, excluding Christmas Day. Mornings are great for families, where you can explore Winter Wonderland at a leisurely pace. When the evening comes around, Hyde Park is transformed by thousands of sparkling lights – so grab your mulled wine, hot chocolate, or stein of Bavarian beer and get ready to join in the festive fun.

Hyde Park

hydeparkwinterwonderland.com

November 17 - January 1

10am on 11th October. Remaining tickets are all general allocation, priced at £25 and include a festive post-show drink.

Kensington Church Street W8 4LA
operahollandpark.com

December 2

EXHIBITIONS



Burma to Myanmar

British Museum

From influential superpower to repressive regime, Myanmar, also known as Burma, has seen dramatic fluctuations in fortune over the past 1,500 years. Experiencing decades of civil war and now ruled again by a military dictatorship, Myanmar is an isolated figure on the world stage today,

and its story is relatively little known in the West. However, the extraordinary artistic output of its peoples, over more than a millennium of cultural and political change, attests to its pivotal role at the crossroads of Asia.

Great Russell Street WC1B 3DG

britishmuseum.org

Ongoing

FAMILY & CHILDREN



Image: Clusternote (flickr)

EXHIBITIONS

Turner and Bonington: Watercolours from the Wallace Collection

Wallace Collection

Embark on a journey – from the rugged

Yorkshire Dales to the grandeur of Venice, pausing en route to enjoy the bucolic delights of crab fishing on Scarborough's beach and to marvel at the gothic splendour of Rouen cathedral from the dockside. This odyssey is undertaken through a one-room display of watercolour landscapes by J.M.W. Turner (1775-1851) and Richard Parkes Bonington (1802-1828), the first time the works have been on display in 17 years. The display brings together ten works by the two artists, with four views of Yorkshire by Turner and five scenes of Normandy and Venice by Bonington.

Hertford House, Manchester Square W1U 3BN

wallacecollection.org

Ongoing

Shakespeare and War

National Army Museum

This exhibition explores some of the ways in which Shakespeare has shaped how we think about soldiers and the Army, and how we imagine war and its consequences today. War is a frequent theme of Shakespeare's writing: from dramatic depictions of campaigns and battles to the soldiers who serve as major and minor characters in many of his plays. Since they were first performed, Shakespeare's works have taken on even greater meaning when Britain has been involved in conflict. Drawing on objects and records from the Civil Wars to the present day, the exhibition explores how Shakespeare's famous plays have shaped attitudes both past and present.

Royal Hospital Road SW3 4HT

nam.ac.uk

Ongoing

Image: Nicholas Kenrick

Events

FAIRS & FESTIVALS



Image: London International Horse Show

London International Horse Show

The UK's most important equestrian indoor event featuring three FEI World Cup classes in Dressage, Showjumping and Driving, now expanded for 2023 with the introduction of a second arena. Alongside the world class competition there are equestrian displays, The Kennel Club Dog Agility, The Shetland Pony Grand National and the Christmas Finale, featuring Father Christmas himself. The

new second arena – The London Arena - has a programme which includes The London Showing Series of 23 different showing competitions and their finals, Kennel Club and Crufts Dog Agility and Masterclasses covering tips on dressage, jumping, driving, eventing, showing and much more.

Royal Victoria Dock,
1 Western Gateway E16 1XL
londonhorseshow.com
December 13-18

Antony Gormley: Body Politic

White Cube Bermondsey
Antony Gormley's new exhibition 'Body Politic' investigates our species' relationship to its industrially made habitat. For Gormley, this comes at an urgent moment in time when our need for refuge is in dynamic tension with our need to roam: our fundamental migratory nature. Across five new bodies of work, the artist sets out to test and question this flux between sanctuary and control, freedom and discipline. He does this by calling upon languages intrinsic to sculpture – silence, stillness, materiality – allowing the viewer to become more aware of their own freedoms of movement and mind. As Gormley has recently stated: 'Each part of this show is an attempt to assess and reflect on our present condition: us now.'

144 – 152 Bermondsey Street SE1 3TQ
whitecube.com

November 22 – January 28

FAIRS & FESTIVALS

Being Human Festival 2023

The UK's national festival returns to 52 towns and cities across England, Scotland, Wales and Northern Ireland. Events include hands-on workshops, walks and tours, talks and discussions, installations and exhibitions, museum pop-ups and lates, screenings and outdoor activities. All Being Human events are free, with

booking required for some activities. The festival programme is made up of events that are open for public booking, schools events and closed events for specific groups. Events are organised and led directly by researchers and staff from universities and research organisations across the country. If you've got a question or query about an event, please reach out to the contact listed on the event page. If you've got any general questions about the festival you can contact us at being-human@sas.ac.uk.

See website for more information
beinghumanfestival.org

Until November 18

Ideal Home Show

Olympia

Are you ready to tick off your Christmas wish list? From festive interior inspiration to unique hand-crafted gifts, deck the halls and explore an array of dazzling displays to make your home sparkle this season. Step into the magic of the season at the Ideal Home Show Christmas and discover the most imaginative and awe-inspiring gifts, home essentials and new year improvements. Shop unrivalled collections from hundreds of independent retailers, as well as plenty of your favourite brands across the themed sections including gifts, home, and decorations.

Hammersmith Road W14 8UX
olympia.london

November 22-26

What, When November - 1

Winter Festival

Southbank Centre

Stroll along the Thames under twinkling lights at our Winter Market, where you can sample delicious drinks and street food or browse for Christmas gifts. At the seasonal pop-ups, take part in alpine-themed curling at The Curling Club, toast marshmallows at Fire & Fromage and enjoy more goodies at Beltane & Pop, Choco Fruit and The Thirsty Farrier. Get your dancing shoes on for the popular Christmas Eve social Five Go Jiving plus our New Year's Day Ceilidh, and don't miss Heart and Soul's Winter Rave, an evening of revelry. Bollyqueer invites you to enjoy a fun and empowering dance class with a queer dose of Bollywood entertainment. Finally, join riotous party starters Pxssy Liquor as they take over the Southbank Centre for one night only at

Pxssy Liquor's Office Christmas Party.
Southbank Centre, Belvedere Road
SE1 8XX

southbankcentre.co.uk

Until January 7

FAMILY & CHILDREN

The Night Before Christmas

Polka Theatre

Amber is six and loves reindeer! It's Christmas Eve but Grandad is feeling tired and Amber's favourite snow-globe gets broken. Then her world is turned topsy-turvy by a surprise visitor and Amber begins an adventure she will never forget. Join Amber on a festive journey like no other - after all, on the night before Christmas, anything can happen. Inspired by Clement Clarke Moore's much-loved

MUSIC



Image: Harald Krichel, CC BY-SA 4.0 creativecommons.org/licenses/by-sa/4.0/, via Wikimedia Commons

Anne-Marie

O2

Bridging topics of sadness, anger, joy, rebellion, and euphoria, UNHEALTHY is Anne-Marie living out her highs and lows on her own terms. Over the album's thirteen tracks, gutsy, empowerment anthems ('Trainwreck', 'Grudge') run alongside tender, vulnerable streaks ('Kills Me To Love You', 'You & I') and guitar-fuelled angst ('Haunt You'). Written and recorded alongside Kamille, McDonough Brothers, BillenTed, Evan Blair, and Nami, the album includes

features from Aitch ('Psycho'), Khalid ('You & I') and, of course, Shania Twain ('Unhealthy'). To date, Anne-Marie has achieved seven UK 'Top 10' singles (including 'Psycho' feat. Aitch, which features on the new album), two 'Top 3' albums and seven billion global streams. Most recently, Anne-Marie collaborated with David Guetta and Coi Leray on 'Baby Don't Hurt Me'.

Peninsula Square SE10 0DX
theo2.co.uk

November 29

en, Where? December '23

MUSIC



Jools Holland and his Rhythm and Blues Orchestra
Royal Albert Hall
Musical maestro Jools Holland and his revered Rhythm & Blues Orchestra are back at the Hall. Pauline Black and Arthur 'Gaps' Hendrickson are founding members of the influential Coventry based two-tone band and ska pioneers The Selecter. Their debut album *Too Much Pressure*, released in 1980, still remains a key moment of British music history. Ruby Turner and Louise Marshall, as well

as the highly talented Sumudu Jayatilaka, who joined Jools for the first time in 2022, will once again feature. Together with the inimitable musicianship of the Rhythm & Blues Orchestra, which features drums from original Squeeze member Gilson Lavis, Jools Holland will be performing tracks spanning his entire solo career. Kensington Gore, South Kensington SW7 2AP
royalalberthall.com
November 24-25

poem 'Twas the Night Before Christmas', we bring Christmas Eve to life in an exciting original production written by Hattie Naylor featuring music, skilful puppetry and a generous sprinkling of festive magic. 240 The Broadway SW19 1SB
polkatheatre.com
November 18 – January 14

Meet Santa at London Zoo

Little ones will get a sprinkling of Christmas magic as they learn what it takes to become one of Santa's helpers in our elf school, before meeting Santa in his magical grotto at the heart of the Zoo. Every child will receive a very special early Christmas gift to take home. The zoo is also running relaxed sessions for Meet Santa. These sessions include the same experience as standard Meet Santa sessions, but with dimmed lighting, quieter sounds and other sensory stimulation to make the area feel more relaxed, specifically designed for those with additional needs.

NW1 4RY

londonzoo.org

November 25 – December 24

BBC Earth Experience

Earl's Court

Embark on an unforgettable journey and explore the extraordinary diversity of our

seven continents on the most epic scale as narration by David Attenborough takes you on a transformative audio visual experience from the BBC Studios Natural History Unit television series *Seven Worlds, One Planet*. Experience an unforgettable journey through the natural world and explore the unique and extraordinary diversity of seven unique continents on the most epic scale. Featuring bespoke narration from David Attenborough, BBC Earth Experience showcases breath-taking footage and music from the BBC Studios Natural History Unit television series *Seven Worlds, One Planet*, projected on multiple multi-angle screens using the very latest digital screen technology. The Daikin Centre, Earl's Court, Empress Place SW6 1TT
bbcearthexperience.com
See website for dates

FILM & PHOTOGRAPHY

Miho Kajioka: How Long is Now?

Photographers' Gallery
Kajioka is fascinated by the chronology and meaning of events. According to her, photography captures moments and freezes them; printing impressions is like playing

with memories and the sense of time. Her minimalist images draw on the Japanese tradition of "wabi-sabi" – the appreciation of beauty in imperfection and transience, and the Zen/Taoist belief that the essence of an object exists in the empty space inside and around it. These negative spaces in her meticulously exposed, toned, and hand-finished prints hold equal significance to the subjects that emerge. The artist has designed a scent to evoke the passing of time. Released into the gallery space, this fragrance accompanies you on the journey.

16-18 Ramillies Street W1F 7LW

thephotographersgallery.org.uk

Until November 19

The Room

Prince Charles Cinema

Tommy Wiseau's "masterpiece" *The Room* has been hailed as the biggest cult film since *Rocky Horror*. So bad it's good, it's drawn a cult following in the US with viewers acting out skits, storming out in disgust, and throwing plastic cutlery during screenings. However unlike other cult films such as *Rocky Horror*, or the *Big Lebowski*, these fans are drawn to how bad they regard the film to be! Come and see the birth of a cult with its poor score, terrible acting and internet meme generating script.

7 Leicester Place WC2H 7BY

princecharlescinema.com

November 29

Daniel Meadows. Free Photographic

Omnibus, 50th Anniversary

Centre for British Photography

On 22 September 1973, Daniel Meadows

set off on a long-planned adventure in a rickety 1948 double-decker bus that he had repurposed as his home, gallery and dark-room. He was intent on making a portrait of England. He was 21 years old. Over the next 14 months, travelling alone, Meadows crisscrossed the country covering 10,000 miles. He photographed 958 people, in 22 towns and cities. From circus performers to day trippers. He developed and printed the photographs as he went along, giving them away for free to those who posed for him. This exhibition will feature dozens of photographs, including loans from The Hyman Collection, as well as previously unseen works of documentary reportage that Meadows made during his travels.

49 Jermyn Street, St James's SW1Y 6LX

britishphotography.org

Until December 17

Northern Ireland: Living with the Troubles

Imperial War Museum

The Troubles engulfed Northern Ireland in conflict for nearly 30 years. It was – and remains – a contentious period, with roots going back centuries. A fragile ceasefire was signed in 1998, yet many aspects of the conflict remain unresolved to this day and are highly contested by those who experienced and participated in the conflict. This exhibition invites visitors to further their understanding of the Troubles through the multiple perspectives of individuals affected by the conflict.

Lambeth Road SE1 6HZ

iwm.org.uk

Until January 7

MOZART
SYMPHONY ORCHESTRA



CONDUCTOR: PHILIP MACKENZIE
SOPRANO: ALICE MACKENZIE

HOWARD BLAKE

The Snowman

Projected onto a large screen with a live orchestral accompaniment

*"You would be hard
pushed to find a more
magical Christmas
experience"*
The Times



Cadogan Hall, Chelsea, Sunday 17th December 2023 at 2.00 and 5.00

Tickets: £34, £32, £28, £18 from the Cadogan Hall Box Office

Tel: 020 7730 4500 www.cadoganhall.com  CADOGAN HALL

All orders subject to a transaction fee unless made in person

© Snowman Enterprises Limited "The Snowman" by Raymond Briggs is published by Puffin. Image © Snowman Enterprises Ltd www.thesnowman.com



What, When, Where? November - December '23

MUSIC

The Gilded Carriage: An 18th-Century European Tour

Foundling Museum

Travel through the musical centres of early 18th-century Europe, in this recital of sublime sonatas for violin and harpsichord. Begin in Rome on 1 January 1700 with Corelli, and visited Handel, de La Guerre and Bach in London, Paris and Leipzig. This concert features Nathaniel Mander (harpsichord) and Sijie Chen (baroque violin). Arrive from 6pm to look around the Museum (included in ticket). This concert is part of the Vermeer Chamber Concerts autumn/winter season. Season passes for their upcoming programme are available to buy.

40 Brunswick Square WC1N 1AZ

foundlingmuseum.org.uk

November 18

Handel's Messiah

Cadogan Hall

Messiah is famed for its sublime arias and uplifting choruses such as 'Ev'ry valley shall be exalted, Rejoice greatly O daughter of Zion, The trumpet shall sound, For unto us a child is born, Worthy is the Lamb & Amen and, of course, the ever-popular Hallelujah Chorus. Nicholas Kraemer returns to conduct the English Chamber Orchestra for a performance of this great choral masterpiece.

5 Sloane Terrace SW1X 9DQ

cadoganhall.com

December 3

TALKS, TOURS, & WALKS

Hidden London

London Transport Museum

Imagine going behind the scenes at some of London's busiest stations, as expert guides reveal the extraordinary infrastructure and feats of engineering usually hidden away below your feet. Discover something completely new as you venture into 'forgotten' historical Underground stations which are usually closed to the public. Step into a time capsule of historic posters,

signage and vintage tiles in a long-disused tunnel, or stand where history was made during the Second World War. You'll learn about the people who shaped London's transport network, as our knowledgeable guides use research from the London Transport Museum's collection to share incredible stories.

WC2E 7BB

ltmuseum.co.uk

See website for dates

Deer in Richmond Park

Without the presence of deer, we would not be able to enjoy the sweeping views of Richmond Park we see today. This is because deer grazing prevents tree seedlings from growing, keeping the grassland open. Richmond Park's acid grassland is a nationally important habitat which is protected by law and depends on grazing for its continued survival. Unlike mowing, grazing creates more variation in structure and plant diversity and does not damage the more than 400,000 anthills. You might notice too that parkland trees have a distinctive 'browse line' as the deer eat all the leaves and twigs growing below 6ft.

royalpark.org.uk

Ongoing

Special curator-led tour of Radical Landscapes

William Morris Gallery

Radical Landscapes is a major exhibition showing over a century of art inspired by the land. It explores the natural world as a space for artistic inspiration, social connection, and political and cultural protest through the lens of William Morris, one of Britain's earliest and most influential environmental thinkers. Organised in collaboration with Tate Liverpool, the exhibition will display work spanning two centuries and feature more than 60 works by artists including JMW Turner, Claude Cahun, Hurvin Anderson, Derek Jarman, Jeremy Deller and Veronica Ryan.

Lloyd Park House, 531 Forest Road

E17 4PP

wmgallery.org.uk

November 17

Forward Book of Poetry 2024 Launch

Foyles

To celebrate the launch of the Forward Book of Poetry 2024, which brings together the best poetry of 2023, join poets Anthony Anaxagorou, Laurie Bolger, Declan Ryan and Jacqueline Saphra for an evening of readings and conversation with Arjunan Manuelpillai.

107 Charing Cross Road WC2H 0DT

foyles.co.uk

November 21

THEATRE

Rebecca

Charing Cross Theatre

'Rebecca', by Michael Kunze and Sylvester Levay, two of the most successful German-language musical theatre composers, had its world premiere at the VBW-theatre Raimund Theater in Vienna, Austria, in September 2006, where it went on to play to sold-out houses in three seasons, and where it is currently enjoying a successful revival. Rebecca, with an orchestra of 18, will be directed by Alejandro Bonatto (director of the critically acclaimed production of Donizetti's 'Rita' and the upcoming production of Francis Poulanc and Jean Cocteau's 'The Human Voice' at Charing Cross Theatre later this month).

The Arches, Villiers Street WC2N 6NL

charingcrosstheatre.co.uk

Until November 18

The Ocean At The End Of The Lane

National Theatre

From the imagination of Neil Gaiman, best-selling author of Good Omens, Coraline and The Sandman, this spectacular and thrilling theatrical event is a tour de force of magic and storytelling. Adapted by Joel Horwood and directed by Katy Rudd, The Ocean at the End of the Lane takes audiences on an epic journey to a childhood once forgotten. Returning to his childhood home, a man finds himself standing beside the pond of the old Sussex farmhouse where he used to play. He's transported to his 12th birthday when his friend Lettie claimed it

wasn't a pond, but an ocean... Plunged into a magical world, their survival depends on their ability to reckon with ancient forces that threaten to destroy everything around them.

85-88 St Martin's Lane WC2N 4AP

nationaltheatre.org.uk

November 25

The Mongol Khan

London Coliseum

Mongolia 2000 years ago. A brutal succession battle threatens the very stability of the Empire. As the great Khan struggles to maintain his supremacy, a plot hatches that will forever alter the balance of power. Mongolia's leading theatre company comes to the UK for the very first time with a lavish production which explores the evolution of ancient Mongolian culture and features an ensemble of over 70! This gripping story is brought to life with a stunning original score, dance and puppetry, with elaborate sets and costumes all inspired by the traditional nomadic culture of the Hunnic Empire.

St Martin's Lane WC2N 4ES

londoncoliseum.org

November 17 - December 2

Macbeth

Donmar Warehouse

A spellbinding story of love and murder, the renewing power of nature, and of the internal struggles of a damaged man as he tries to control his destiny. This bracingly fresh production of the Scottish play places us inside the mind of Macbeth, asking are we ever really responsible for our actions? Shakespeare's most extraordinary psychological drama is led at the Donmar this winter by David Tennant, who plays the title role for the first time in his illustrious stage career. He is joined by Cush Jumbo (Hamlet, The Good Fight) as Lady Macbeth, directed by Donmar Associate Director Max Webster (Henry V, Life of Pi).

41 Earlham Street WC2H 9LX

donmarwarehouse.com

Opens December 8

Compiled & edited by Fahad Redha

Do you have an upcoming event you'd like to publicise?

Contact our team now sales@eyeonlondon.online

MAKE THIS AN EVENTFUL CHRISTMAS!

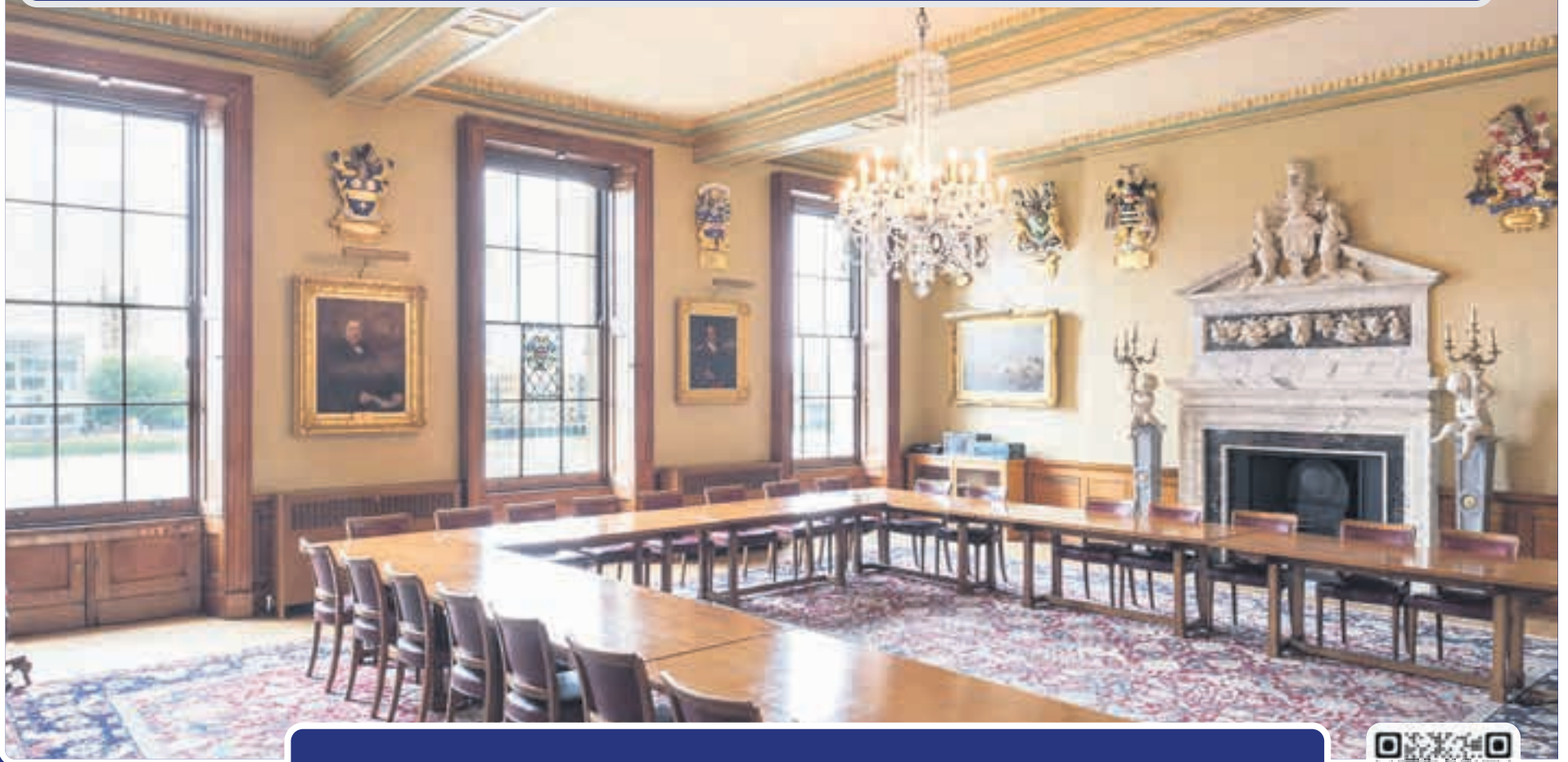
SPREAD THE CHEER AND ADVERTISE HERE.

Enjoy 25% off advertising in our special Christmas & New Year issue
Sales@EYEonLONDON.online

The FISHMONGERS' Company



Grade II* Listed building with a unique history and rich architectural heritage
Premium riverside location, exceptional cuisine and first-rate service



Fishmongers' Hall, London Bridge EC4R 9EL
Contact: events@fishmongers.org.uk 020 7626 3531



Arts & Culture by Simon Tait

Two hundred years of the national treasure

To stand beneath the newly-cleaned and massive del Piombo masterpiece *The Raising of Lazarus* in Room 32 (the first picture on the right in our gallery shot) couldn't have been more appropriate for the Director of the National Gallery, Gabriele Finaldi, to announce the details of the institution's bicentenary celebrations. The accession number of this picture is NG1, the first work of art to come into the new public gallery as it opened in May 2024. There are now over 2,300.

He unveiled a £95 million celebration initiative called NG200, featuring iconic images from Trafalgar Square's walls that will embark on a nationwide tour throughout the 2024-25 period. Additionally, this marks the largest capital development of the Trafalgar Square building in three decades.

The birth of the National Gallery was not easy. Towards the end of the 18th century there was a feverish yearning for a national collection of paintings to match those sprouting up over Europe, and in the 1770s the outstanding holding of Sir Robert Walpole (put together largely on the advice of his son, Horace) with paintings by Lely, Van Dyck, Poussin, Rubens, and Rembrandt, was offered for sale to the nation by his heirs. The government dithered, and by the time it had decided graciously to accept, it had already been snapped up by Catherine the Great for £40,000 in 1779, to be the basis of what is The Hermitage. Others were offered, including one that became the core of Britain's first purpose-built public gallery, at Dulwich – and turned down, largely on grounds of quality.

As the century turned, there was a growing clamour from artists who bemoaned the lack of access to European art, which would allow the British school to flourish. A group of connoisseurs formed a British Institution aimed at creating a national gallery; members lent works for exhibitions, and one of them, Sir George Beaumont, gave 16 paintings of acceptable standard.

It wasn't until 1823 that the die was cast when the collection of a recently deceased banker, John Julius Angerstein, came on the market with works by Raphael, Velasquez and Titian, as well as del Piombo. Six months after Angerstein's death, the House of Commons decided not to make the Walpole mistake again and bought the collection for £60,000. At first, said Finaldi, it was thought to consign it to the British Museum, but it opened in Angerstein's house in Pall Mall as the separate National Gallery on 19th May, 1824.

However, the Pall Mall building was too small and dark, unfavourably compared with Paris's spacious and palatial Louvre. It moved a few doors up Pall Mall, and then to Carlton House Terrace, to accommodation that was hardly more capacious. In 1832, a new building designed by William Wilkins was growing on the site of the Royal Mews at Charing Cross and, despite fears that pollution from the foul air of central London might ruin the paintings, the National Gallery duly moved in, with the Royal Academy sharing between 1837 and 1868. Through the 19th and early 20th centuries the collections grew steadily with notable gifts and help from the new National Art Collections Fund, today called Art Fund.

In the Second World War, on the direction

of the Prime Minister Winston Churchill and Kenneth Clark, the National Gallery's then Director, the paintings disappeared to safety in caves deep in the Welsh hillsides and then the slate quarry near Blaenau Ffestiniog, while Wilkins's building became better known for Myra Hess's free lunchtime concerts.

After the war there was tinkering with the Wilkins building. However, in the 1980s the three grocer Sainsbury brothers made a donation, which enabled the building of a new wing on the site of a former car park. It became the de facto main entrance.

Work has now started on turning the Sainsbury Wing into the actual main entrance with space being cleared up two storeys to bring light onto the enlarged gathering area, allowing a more complete connection with the old Wilkins building. The education centre behind the main building in Orange Street will be enlarged and improved.

Finaldi believes that the gallery has overlooked the comfort and convenience of its financial supporters, who are responsible for contributing half of its income. Therefore, the gallery plans to reshape its interior and make better use of underutilised back buildings, where it will create a "Supporters' House" within the existing structure for the benefit of members and other donors. Furthermore, the gallery intends to establish a new research centre with its own separate entrance.

However, beyond that space is a whole country – four whole countries and nine English regions – and some of the best-known masterpieces from Trafalgar Square will be going on leave. Partnerships have been made with 12 venues outside London each of which has its own tailor-made programme woven around one painting, and it's worth listing them.

The Laing in Newcastle will get Turner's *The Fighting Temeraire*; York Art Gallery gets Monet's *The Water Lily Pond*; Renoir's *Umbrellas* goes to Leicester Museum & Art Gallery; Cambridge's Fitzwilliam will get Botticelli's *Venus and Mars*; Oxford's Ashmolean will have the 14th century Wilton Diptych; Brighton Museum & Art Gallery will have Rembrandt's *Self Portrait* (age 35); the Ikon in Birmingham gets Artemisia Gentileschi's *Self Portrait* as St Catherine of Alexandria; Constable's *The Hay Wain* will go to Bristol Museum & Art Gallery; the National Library of Wales at Aberystwyth will have Canaletto's *The Stonemason's Yard*; the Walker in Liverpool will get Velasquez's *Rokeby Venus*; the Ulster Museum gets Caravaggio's *The Supper at Emmaus*; and Vermeer's *A Young Woman Standing at a Virginal* will be at National Galleries Scotland in Edinburgh.

Meanwhile, the Trafalgar Square site gets a make-over designed to make your appreciation of great art comfortable and more enjoyable. "We believe we need to make the experience of visiting the gallery welcoming and complete," said Finaldi. "This is your gallery, these are your paintings. We all miss out when anyone thinks that the National Gallery is not for them...(the) thoughtful interventions will help to make the gallery entrance lighter, more accessible, and more visible as a public space."

Simon Tait

NG200



Monet's Water Lily Pond



Turner's the Fighting Temeraire



Room 32 of the National Gallery

Classical Music *by Simon Mundy*

Partner Content

The Bach Choir is one of the most venerable amateur (in the best sense of the word) choral organisations in London and has been singing away for 148 years. It was formed as part of the renewed interest in Bach that had followed Mendelssohn's revival of his music in their home town of Leipzig in the 1830s and his introduction to it for big amateur choruses - something he enjoyed conducting himself in London and Birmingham. That link to Leipzig was cemented in 1875. The town had become a magnet for music students from England (Elgar was one of them a few years later), including a young tenor, Arthur Coleridge, who did not turn professional but still wanted to pursue his love of Bach's music after he became a lawyer. He realised that Bach's last great work, the B minor Mass, had never been performed in London and determined that it should be. He gathered the Choir (including one of the Queen's daughters, Princess Helena, and William Gladstone) and approached the famous Swedish singer Jenny Lind's husband, the composer Otto Goldschmidt, to conduct it.

Hill inherited The Bach Choir from Willcocks, the legendary head of music at King's College Cambridge, who virtually reinvented the tradition and sound of Christmas carols in his famous green volume of arrangements for Oxford University Press, Carols For Choirs. There is probably no choral singer or school chorister in Britain who does not have those Willcocks harmonies deep in the subconscious. That also explains why the Choir does not reach for Handel's Messiah at Christmas, as so many do, but celebrates with carols only - this year with Hill in Cadogan Hall on 19th December. That other doyen of carol masters, John Rutter, conducts them too, in the Royal Albert Hall on 6th December.

David Hill and I spoke the morning after he had led a performance of Brahms' A German Requiem in the Royal Festival Hall, to open the Choir's season. He had been delighted with the way they and the Philharmonia Orchestra had blended their sound. That concert had also included Amy Beach's The Canticle of the Sun, a work by one of America's finest late Romantic composers and one which reflects the transatlantic connection Hill has made, thanks

breath well before they start actually singing. 'Orchestral players in the wind and brass sections do it automatically because they have had a lifetime's training but for most amateur choral singers it is a skill they have to learn at a later stage in life.' A quality that he feels is special to The Bach Choir is their ability to sing a cappella, without accompaniment. It is something they learned to do with Sir David Willcocks and that Hill has been delighted to carry on. 'Most big amateur choirs can't do that.'

David Hill has found his job changing since he took over just before this century began. The members' lives have changed too, as working has become more flexible but also more demanding - the weekly rehearsals a welcome anchor to their week. Hill sees his role now not only as a conductor but as a communicator for classical music at a time when there is a feeling that society (and government) are ambivalent about it. He has started making podcasts called Change Your Tune, via The Bach Choir's website (<https://thebachchoir.org.uk/listen>) in which he discusses important works with someone outside mainstream classics: the Dies Irae from Verdi's Requiem with Hollywood composer Harry

Gregson-Williams, for example, and Beethoven's Ode to Joy with Love Ssega.

One area of music has so far escaped David, and that is opera. He has never had the time to fit the long rehearsal and performance schedules into his diary but, 'it is something I'd love to do.' When his duties at Yale finish next year he hopes he can think again. 'I want very much to work on Benjamin Britten's operas. I think and hope I'll have the technique.'

Simon Mundy



David Hill

The Bach Choir and David Hill at Christmas


The list of subsequent directors of the Choir is just as extraordinary: the composers Charles Stanford, Henry Walford Davies and Ralph Vaughan Williams, and for a few years the conductor Adrian Boult, who was busy forming the BBC Symphony Orchestra too and had sung in the Choir himself before World War One. Incidentally, this year marks forty years since Boult's death and it is worth remembering what an astonishing effect he had on music in London, not only with the BBC but with the London Philharmonic Orchestra.

Since Boult in the 1930s only three people have led the Choir: Reginald Jacques, David Willcocks and for the last twenty-five years, David Hill, a man with such a roster of appointments to his name that it is quite hard to list the choirs he has not been conducting. He has also been in charge of the choristers at Winchester and Westminster Cathedrals, St. John's College Cambridge and the Philharmonia Chorus, as well as the BBC Singers.


to his directorship of Yale University's Schola Cantorum. He spends 14 weeks in eight trips each year on the 'superbly well-resourced' Yale campus.

He started his musical journey in Manchester at Chetham's School of Music in 1969 and it was not all choral. 'I was like a boy in a toy shop,' he says. 'There were hours and hours of violin as well as the piano, organ and eventually conducting.' He is especially glad of the violin training because it gives him an instant rapport with the orchestras that accompany his choirs. 'It helps me relate and practically it means I can understand the bowings in detail.' He goes the whole hog, dispensing with choruses and spends time as Associate Conductor of the Bournemouth Symphony Orchestra. 'They keep honing my ears!'

'I strive so much to get the Choir to realise they are part of the orchestral texture when they are singing the big scale repertoire like the Brahms Requiem.' He says, that means guiding them to prepare their



You're more into choral than you think...



Musical Director **David Hill** and an assortment of guests take a closer look at choral music's most famous pieces. You probably know them from films, TV, games, adverts, football matches and even Christmas parties!

Listen now wherever you get your podcasts



Bach Choir

Antiques & Art

The art world loves a good story. The most venerated are those relating to sleepers – works of art that turn up mis-catalogued at auction and the dilemma is “could it be a ...?” On 6th December, Sotheby’s evening auction of ‘Old Master & 19th Century Paintings’ includes ‘The Adoration of the Kings’, oil on oak panel by Rembrandt van Rijn (1606-1669). In the 1950s this painting was deemed to be by the master and was exhibited as such in three exhibitions in Netherlands museums. However, over the years

opinions radically changed and when Christie’s, Amsterdam, offered it for sale in 2021, it was contemptuously catalogued as ‘circle of Rembrandt’ and sold for £731,605 (including premium). ‘Circle of ...’ signifies the work is merely of the period and in the style of the artist. Following the picture’s cleaning and detailed scrutiny via infra-red imaging, experts now concede the small nocturne Biblical scene is an indisputable work of the late 1620s by Rembrandt. This time around it is anticipated to make up to £15 million!



Perhaps your penchant is for contemporary art rather than Rembrandt, if so, a visit to Cork Street might be exciting. Located to the north of Burlington House, home of the Royal Academy, this illustrious Street was once the home of bespoke tailoring, frequented by the likes of the infamous dandy, Beau Brummell (1778-1840). Later, the tailoring trade moved to nearby Savile Row. January, 1925 brought a dramatic transformation for Cork Street when Fred Mayor (1902-1973) opened a gallery at number 18. This motivated others – in 1938 the legendary American art collector and socialite, Peggy Guggenheim (1898-1979), launched her gallery at No. 30 Cork Street. At one time there were over twenty independent art dealers operating from the street making it the epicentre of the capital’s contemporary art scene. However, in 2012 the artistic hub came under threat from developers, who had plans to redevelop the entire street with luxury flats and boutiques. After protests from the likes of, David Hockney and Sir Peter Blake, the street remains the domicile of some of London’s primary art dealers.

central ideology.

Since 1958, a name synonymous with the street is, Waddington. Until 27th January, 2024, **Waddington Custot**, 11 Cork Street, W1S 3LT, displayed the abstract sculptures and paintings of Greek artist, Sophia Vari (1940-2023). Offering an overview of her work from the past two decades, it includes *Pleine Lune* and *Joie de vivre*, two of Vari’s final sculptures in carved marble.

In my view, Peter Brown (b. 1967) is one of the most consummate, tonally controlled *plein air* painters of his generation and therefore I fervently advocate a visit to **Messums London**, 28 Cork Street, W1S 3NG. Between 22nd November-23rd December ‘Pete the Street’ as he is affectionately known, showcases fifty of his stunning paintings of London. All painted in situ, whatever the time of day or weather conditions, locations embrace the likes of Piccadilly, Trafalgar Square, Marble Arch and Primrose Hill. Others vividly record momentous events such as Queen Elizabeth’s Platinum Jubilee and the coronation of King Charles III. Given the prodigious genius of Brown’s brushwork, prices

foremost dealers in the art of the European Middle Ages, Fogg’s current display, which ends on 1st December, focuses on Islam in Europe. Among the highlights is a stunning Spanish Lustred Charger dating to around 1470-1500 and an Arabic manuscript, circa 1300-1325.

Staying in Mayfair, here are a couple of other events that you might wish to investigate. Now in its 10th year, the **Flux Exhibition**, 178 St. James, Piccadilly, has established itself as an important platform for contemporary artists and offers punters the opportunity to gain access to gifted, but currently little-known artists, who, feasibly, will be the big names of tomorrow. This inspirational art happening is the brainchild of Liza Gray, who selects around 70 artists she deems worthy of higher recognition. Taking place between 7th-10th December, the venue is opposite the Royal Academy.

Founded in 1891, the illustrious Chelsea Arts Club, 143 Old Church Street, has always been an influential nucleus for artistic discussion and creativity. It was here, in 1989, that a group of artists instigated The Small Paintings Group, the crucial parameters being, membership is limited to 35 and paintings exhibited with the Group must not be larger than 12 by 12

triple calendar wristwatch, selling for £61,360.

Moore, played James Bond in seven films, more than any other actor in the Aeon series and the sale coincided with the 50th anniversary year of Sir Roger Moore’s first appearance as 007 in *Live and Let Die*. Bond fanatics have the opportunity to bid for film posters at **Ewbank’s**, Burnt Common Auction Rooms, London Road, Send, Woking, GU23 7LN. On 16th and 17th November, the firm is tendering *The Steve Oxenrider James Bond Collection*. This notable assemblage includes the bold British Double Crown Advance Style, a film poster for *From Russia with Love* (1964), and the scarce Advance British Quad film poster for *Thunderball* (1965) – with two panels designed by Frank McCarthy (1924-2002) and two by Robert McGinnis (b. 1926), the intention was the poster would be cut into four pieces (very few survived, complete or otherwise). On 1st December, Ewbank’s conduct a sale of Vintage Posters, including artwork by Brian Bysouth (b. 1936), who is responsible for some of the most iconic film posters ever printed.

Posters can also be discovered at the **Pullman Gallery**, 14 King Street, St. James’s, SW1Y 6QU. Situated next to Christie’s auction rooms, the business offers an eclectic selection of late 19th and 20th century collectables, including posters such as the immensely rare ‘*Bugatti Type 35*’ by Roger Soubie (1898-1984) and ‘*Palace Hotel, St. Moritz*’ a poster of circa 1920 by Emil Cardinaux (1877-1936).

And whilst on the poster theme, the **London Transport Museum**, Covent Garden Piazza, WC2E 7BB, has just opened the Global Poster Gallery. Set over two floors, it displays a selection from the museum’s remarkable collection of over 30,000 advertising posters, including the Underground’s first pictorial poster titled ‘*No need to ask a p’liceman*’, designed by John Hassall (1868-1948) in 1908.

Anthony J. Lester, FRSA
lesterartcritic@eyeonlondon.online

Contemporary art rather than Rembrandt?

Having been the recipient of several prestigious awards, including first prize in the 2001 BP Portrait awards and having thirty-one of his paintings acquired by the National Portrait Gallery, Stuart Pearson Wright (b. 1975) can justifiably be regarded as one of Britain’s foremost portrait painters. Until 25th November his engaging images are on view at the **Flowers Gallery**, 21 Cork Street, W1S 3LZ. In 2014 Wright moved from East London to rural Suffolk and the area’s surrounding folklore and mythology have become a key motif in his recent work. The figure of a ghostly black dog said to roam the East Anglian coastline crops up repeatedly in the exhibits. However, portraits remain the exhibition’s

seem modest at between £2,250 to £15,000.

The reputation of Cork Street as an art nucleus was further enhanced this year with the opening of three galleries – **Alison Jacques** has an impressive 6,000 sq.ft. space at No. 22; the **Stephen Friedman Gallery** have relocated from Old Burlington Street to No 5-6 Cork Street and leaders in the representation of visual arts practice from Africa and its global diaspora, **Tiwani Contemporary**, are at No. 24.

For something completely different, make your way to **Sam Fogg**, 15D Clifford Street, W1S 4JZ, situated just round the corner from Cork Street. One of the world’s

inches. Since their inaugural show in 1991, they have mounted over fifty exhibitions with their latest presentation taking place between 29th November to 8th December at **Panter and Hall**, 11-12 Pall Mall, SW1Y 5LU. PJ Crook (b. 1945) shows work as an invited artist.

The insatiable demand for items associated with celebrities shows no sign of waning. On 4th October, Bonhams offered the *Sir Roger Moore: The Personal Collection* – ranging from modest items such as Moore’s Garrick Club salmon pink and green silk tie, which raised £4,096, to his conspicuous mid-1990s Omega stainless steel automatic



The Mermaid I Married, oil, acrylic, make-up, by Stuart Pearson Wright (b. 1975), Flowers Gallery



October Half Term, Trafalgar Square, oil on canvas by Peter Brown (b. 1967), Messums London



CUPPAKE /FOOD FOR THOUGHT II PROTOTYPE, Flux Exhibition, credits - The Dna Factory MRSS

Antiques & Art

Partner Content

The Steve Oxenrider James Bond Collection

Part 1, November 16-17

Steve Oxenrider is a retired educator, life-long James Bond film fan and collector, and freelance writer who has contributed to many Bond books and publications, as well as being credited on the supplementary features for several of the DVDs.

Now he has shipped his fabulous collection of 007 rarities across the Atlantic from the USA to Ewbank's in Surrey for a two-part sales series in November 2023 and Spring 2024. Together they are expected to fetch between £500,000 and £1 million.

Rare original posters for some of the earliest films in the Bond franchise lead the highlights in the first two-day sale on November 16 and 17, which is expected to fetch up to £300,000.

Heading the list of highlights are British Quad (30 x 40in) posters for *Dr No* (1962), the film that launched the series, with illustration by Mitchell Hooks, and for *Thunderball* (1965), the design featuring two panels of poster illustration on the left by Frank McCarthy and two on the right by Robert McGinnis.

Beyond the posters, Steve Oxenrider also specialised in collecting material linked to the films' premieres, including tickets, brochures, as well as numerous lobby cards used to promote films within the cinemas themselves.

One of the most important examples in his collection is the *Thunderball* (1965) Gala Charity Premiere brochure from Wednesday, 29th December 1965, signed to the inside by Luciana Paluzzi, who played *SPECTRE* assassin *Fiona Volpe* in the film. It should sell for £700-1,000.

Oxenrider, also secured premier brochures for other films in the franchise.

A Royal World Premiere brochure for *On Her Majesty's Secret Service* (1969) at the Odeon, Leicester Square on Thursday, 18th December 1969, should take £400-600, the same estimate for the Gala Scottish Premiere brochure

for Odeon Theatre, Edinburgh, January 14th, 1972, for *Diamonds Are Forever* (1971).

"We have been holding dedicated James Bond auctions for years now, but this collection is on an entirely new level," says Ewbank's partner and Head of Entertainment Memorabilia, Alastair McCrea. "We take it as a compliment at Ewbank's that Steve has chosen to send the collection to us in the UK to offer it auction, rather than keep it in the US.



Ewbank's

Upcoming Sales:

The Steve Oxenrider James Bond Collection
16 & 17 November

Vintage Posters including the Personal Brian Bysouth Artwork Collection 1 December

Jewellery, Watches & Coins 6 December

Silver & Fine Art 7 December

Cars & Motorbikes 8 December

Antiques, Asian Art, Books, Stamps, Clocks & Furniture
8 December

Fine Wines & Spirits 12 December

Toys & Models 13 December

Christmas Gifts including Jewellery 13 December

Ewbank's, Burnt Common Auction Rooms, London Road, Send, Woking, Surrey, GU23 7LN

01483 223101

info@ewbanks.co.uk

www.ewbanks.co.uk

Cinema Club by Henry Scott-Irvine



An Animated Story of Love, Love Lost & Joy

Robot Dreams

Robot Dreams is a truly touching, yet highly amusing animated feature film. One of the most inventive animations of our age. A solid gold masterpiece.

Robot Dreams is a 102 minute Spanish-French, EU Arts funded, multiple investor backed co-production, adapted from a graphic novel by Sara Varon. This vibrant film is filled with soul-jazz music, and metropolitan sounds, but *no* dialogue. Apparently it's visually inspired by certain schools of Japanese animation, according to the screenwriter-director. We can certainly see meticulously drawn street scenes. These streets, however, are not Japanese, but those of New York.

Robot Dreams is set in Manhattan somewhere between the timeframe of the late 1970's and the early 1980's. All of the characters are variant animal species, or Robots. "Why are all of the characters animals?" enquired a young boy of the director Pablo Berger at The LFF's screening at The Curzon Mayfair Q & A. He responded kindly.

I'd venture that Berger's ultimate aim comes via 'the theatre of the absurd', and surrealistic satire. All in order to capture Manhattan's funky heyday, with scenes set in Chinatown, the hustle and bustle of NYC's Downtown, and Central Park. All vividly hand drawn. Key scenes capture street dancing with the characters in Central Park, grooving to beatboxes blaring out Earth, Wind & Fire's *September*. The song becomes a placeholder. A musical motif for the memories shared by the two main characters.

Early scenes begin in the one room apartment of a lonely character named Dog. He is a Dog! Dog sees a TV advert for a companion that you can 'build yourself'. In a metropolitan world where 'the watchers' watch 'the watched', we look at Dog from *their* point-of-view. We peer through Dog's apartment window from the perspective of a flock of inquisitive Pigeons. They gather to watch Dog as he opens a huge cardboard box. All in readiness to construct his Robotic companion.

Robot and Dog soon bond and become best buddies. They immediately fall in love. The pair visit Coney Island Amusements. Robot takes Dog deep sea diving. A bad move. Robot needs oiling. Robot collapses on the beach. Dog can't move him. So he returns the following day with STP Oil and a tool kit. Only to find the beach surrounded by barbed wire, and gated. Locked-up until the following summer. Dog's buddy remains stuck in the sand. All alone and sad eyed.

Months pass. Dog does all he can to rescue Robot.

What follows is a film of inventive animator imagination. Almost as a homage to the many key aspects of Silent Cinema. We also have memories seen as montage-styled-flashbacks a la Nic Roeg's movies, Hitchcockian P.O.V shots, and comedic nods to Buster Keaton. Yes! All drawn as animation. Meanwhile, the Robot dreams of his own beach escape. He then appears to *actually* get away from the beach. Only for us to suddenly realise that the escape was *just another Robot dream*.

Dog goes sledging in the snow covered hills of upstate New York, only to crash, ending up in plaster. Sad and alone on a bus back to Manhattan, Dog peers through steamed-up bus windows, drawing his own image in the condensation. A metaphorical tear rolls down the windowpane from his own finger drawn eye.

The film's ending, which I will not reveal, is both true to life, and inspirational. The message? Let go of your past and move on. I guarantee you'll leave smiling, but with a tear in your eye. Go and see this film when it officially opens in February through Curzon Cinema distribution. Meanwhile, watch the awards pour in.

Take the family. See *Robot Dreams* on a big screen or stream it online. You'll not be disappointed

Jonathan Glazer's Return

The Zone of Interest UK premiered to critical acclaim at this year's London Film Festival when almost 5,000 people saw it at the Royal Festival Hall over two separate screenings. The film proved to be the most popular film at the 67th LFF. Not only in terms of pre-bookings, but also in terms of capacity. All hot on the heels of The Grand Prix award at this year's Cannes Film Festival where three more prizes were given to the film. Touted as the most anticipated film of the year, it's some ten years since director Jonathan Glazer made his last feature film *Under The Skin*. His first movie being the 'Brit Gangster Flick' *Sexy Beast* in 2000.

To walk into this film wholly uninitiated would be the best plan of action for actual full-on impact. Should you wish to do that? Stop reading this review. That, however, would be a tad churlish. So I'll steer you through. Just imagine that you haven't seen any clips, trailers, or read any reviews (no official Trailers or Clips have yet been made available at the time of writing this).

The next two paragraphs will attempt to describe the film as Glazer intended you to see it. Fresh.

A black screen filled with unsettling sonic-inspired music lasts for up to three deafening minutes. Next we watch a group of people relaxing by a midsummer lake. Some young men are seen fooling around, splashing one another. Subsequent scenes show a well-off family with a large house that has an extensive garden situated near to fields and an orchard. The family appears to be happy. They have a pet dog. A maid is there working in service. This German speaking family is living in a 1940's period house. A woman tries on a Mink Coat in her bedroom, before ordering the maid to have it cleaned. A clue suggests the origin of the coat. Disturbing background industrial sounds linger obtrusively. A frivolous garden conversation demeans people with a throwaway remark, "A typical Jew, and a typical Bolshevik", says a female friend.

A Nazi is seen in the hallway. Over the garden wall we see glimpses of some buildings. This is Auschwitz. The Holocaust Death Camp for a million Jews, filled with its horrific gas chambers. Meanwhile, carrying on with life, the Höss household reveals the pursuit of 'a normal everyday family'. We soon realise that this is the home of the camp Commander, Rudolph Höss. From there on in, the chills begin. The Höss family's ambivalence as to what is going-on, unseen, soon becomes sickening. Their 'normalisation' of this matter beggars belief. It literally eats at your soul. Yet we see nothing of the prisoners and their plight. Only horrific sounds reveal certain clues as to the horrors occurring just over the Höss's garden wall.

The 2,500 capacity LFF audience remained transfixed throughout.

Although the film is based upon the book *The Zone of Interest* by Martin Amis, writer-director Glazer obtained special permission to access Auschwitz's archives. He examined the testimonies of a gardener who had made diary notes of a particular Höss family conversation, which he had overheard. The said conversation becomes the turning point of the film.

The servants employed by the Höss's had also made diary notes. All now accessed and fully appraised by Glazer for his screenplay. Thereby enabling us to witness untold matters. Evidence based truisms that now lend a sharpened authenticity to the film; alongside the protagonists real names. Amis's book had incorporated fictionalised scenes with fictional character names.

The uncomfortable voyeuristic cinematography of this unmoved Nazi family is well portrayed by the film's German cast. Subtitles are provided in English throughout.

The naturalism is honed from months of preparation. There were crew-cleared sets, where - in some cases - up to ten remote controlled movie cameras covered the Höss's mundane, but deeply troubled lives.

Never has audio design - coupled with contemporary classical music - had such an impact in modern day cinema. The last time I heard such audio design and *such volume* - asides in comic-based sci-fi films - was 40 years ago in 1983 in Francis Ford Coppola's *Rumble Fish*. Meanwhile, the groundbreaking usage of Ligeti's music in Stanley Kubrick's *2001 A Space Odyssey* (1968) must have had an influence on Mica Levi's stunning score. Albeit some five decades later.

There is much invention amid the 'naturalism'. Nightmarish night scenes reveal one daughter of the Höss family leaving hand picked orchard fruits in the muddy trenches of 'The Death Camp'. All done in the dead-of-night for the prisoners to find the next day. These scenes are projected in negative monochrome and shot on Thermal Imaging Cameras. A mixture of contemporary documentary footage is also later fused with the film's usage of naturalism versus non-naturalism. This technique stylistically recalls certain aspects of the work of filmmakers such as Jean-Luc Godard, and Lindsay Anderson, and, most notably, by John MacKenzie in the BBC *Play For Today* film of John McGrath's via the 7.84 Theatre Company's *The Cheviot The Stag & The Black Oil* (1973) in a mixture of non-naturalism, dramatic naturalism, and modern day documentary techniques. This is a strength. It takes the film into the realms of Brechtian distancing devices, which are so seldom used in contemporary mainstream cinema. This Brechtian technique helps to sharpen our gaze, and focuses our engagement throughout.

The Zone of Interest opens in mid-December. It also opens in January in Poland where Auschwitz remains as a retained Holocaust Museum-of-Horrors for all time. .

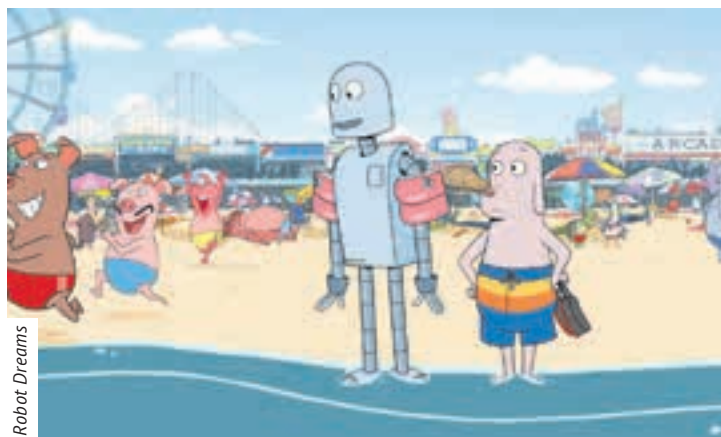
LFF Debut

Black Dog, a stunning directorial debut from eighteen year old Georges Jaques. The film received a well deserved full house screening with standing ovation at its London Film Festival world premiere on October 14th at the Vue Cinema in Leicester Square. The film reminds me of Liverpool playwright Willy Russell's 1983 Channel 4 & Yorkshire TV's filmed series *One Summer*. Overlooked and long forgotten, I cannot imagine the filmmakers have heard of this? Similar themes, however, were explored there.

Black Dog, a contemporary euphemism for depression, looks at how new friendships develop through an actual journey; embracing loss, personal trauma, and regret. All seen through a combination of adventure, misfortune, and hilarious banter. This is a pertinent powder keg of a movie. Rich in insight with electrifying performances from the dual male leads of Jamie Flatters and newcomer Keenan Munn-Francis. Their portrayals of the characters' hidden personal issues and troubled lives, bubble-up into a vibrant energy to captivate you at every twist and turn. Even though 45 minutes of this film plays-out via a road journey, you'll be amazed how the narrative rattles along. This is life affirming storytelling at work here.

With writer-actor Jamie Flatters and writer-director George Jaques making their debut movie at such a precocious age, a pathway of promise is clearly just around the corner. Show this to Martin Scorsese guys. You are on your way!

Henry Scott-Irvine



Robot Dreams



Black Dog

grandappetites *by Emma Trehane*

The holiday season is upon us, and what better way to elevate your festive feasting than with the elegance of Rick Stein's Christmas Seafood Platter? Priced at an enticing £69, this seafood platter is an ocean-inspired delight that promises to stand out from anything you'll find at your local supermarket or farm shop.

Cornish Crab - A Global Delicacy:

The star of the show is undeniably the Cornish crab, a true delicacy that takes centre stage in this seafood extravaganza. Renowned as the best crab in the world, each succulent bite is a testament to the unparalleled freshness that defines Rick Stein's culinary philosophy.

Rick Stein's Smoked Salmon:

The 200g of Rick Stein's smoked salmon is full of delicate flavours and impeccable texture. This smoked salmon sets a new standard, elevating your festive spread with a level of freshness and quality that is truly unmatched.

Whole Cooked Prawns - Size and Succulence:

Get ready to appreciate the 400g of whole cooked prawns, a notable achievement in size and succulence. Meticulously cooked to perfection, these prawns challenge the conventional standards of a holiday platter. Bid farewell to the commonplace and embrace a seafood experience that stands out from the ordinary.

Savour the Season

with Rick Stein's Festive Seafood Platter

Smoked Mackerel Pâté - A Flavorful Delight:

Adding a unique touch to the platter is the smoked mackerel pâté. Creamy, rich, and brimming with smoky goodness, this addition showcases Rick Stein's commitment to providing a dining experience that goes beyond the expected.

Expertly Crafted Sauces:

The jars of Aioli and Marie Rose Sauce, crafted by Rick Stein's chefs in Padstow, are the perfect companions to the seafood treasures on this platter. These sauces are more than condiments; they are full of flavours, enhancing each bite without overshadowing the natural taste of the seafood.

A Zesty Finale:

Completing the feast is the inclusion of lemons, adding a zesty, citrusy finish to the platter. The refreshing burst of citrus provides the perfect contrast to the richness of the seafood, creating a well-balanced and memorable meal.

A Note on Unavailability:

It's important to note that, in the pursuit of perfection, occasional product substitutions may occur. This commitment to using the finest, freshest ingredients, even if sourced from different providers, ensures that you receive the best possible experience despite any unforeseen circumstances.

Rick Stein's Christmas Seafood Platter extends beyond mere sustenance; it embodies a tribute to freshness, flavour, and the mastery of culinary craftsmanship. At £69, it represents a true bargain for the quality and variety it offers. This holiday season, make a statement with a hands-on feast that will have your guests talking long after the last bite. Nothing says Christmas like the exquisite taste of the sea, expertly curated by the legendary Rick Stein.



Emma Trehane

THIS CHRISTMAS, GIVE THE GIFT OF STRENGTH

At **PROATHLON** we coach our members to become competent weight lifters. Give us 6 weeks and see your gym confidence, strength and fitness levels skyrocket.

Our 6-week challenge membership is the perfect way to start 2024. Train individually and get 12 personal training sessions or train in a group and get 18 small group training sessions. All for just £950 or £250 respectively.



Contact Simon Jackson

simon@proathlon.co.uk

proathlon.co.uk

020 7332 0795

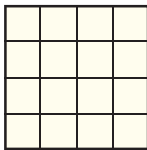
11	26	26	10	5	4	4	5	4			1		3
	5		5		20		11	13	13	5	7	5	
4	22	15	20		10	11	10	5		20		10	
	10		14		14		4	5	13	4	5	4	
18	5	11	10	23	13	12		21					15
10	5	4	20		12	11	17	5			20	5	11
15		23		22		21		26			2		26
4	3	11		14	24	5	10		26	11	10	5	
16				15		26	5	6	23	13	5	26	
15	3	25	11	10	26		22		10		12		
5		11		4	15	17	14		5	7	11	17	
8	11	4	2	5	4		23		22		23		
19		3		4	9	5	8	5	20	14	13	4	

1	2	3	4	5	6	7	8	9	10	11	12	13
									R	A		N
14	15	16	17	18	19	20	21	22	23	24	25	26

As you get the letters, fill in other squares with the same number in the main grid and control grid. Check off the alphabetical list of letters as you identify them.

WARM AIR, PRIME VIEW

Using all 16 letters of the phrase above, form four words each of four letters which will fit in the grid to form a magic square in which the words can be read both horizontally and vertically.



1. The Walker Art Gallery is in which British city?
2. What adjective is used to describe matters relating to the lungs?
3. What was Ronan Keating's first UK No 1 solo hit after he left Boyzone?
4. Which Australian bird is also known as the laughing jackass?
5. Drew Barrymore found fame as a child actress for her role as Gertie in which classic sci-fi film?
6. Which film actress famously said the only thing she wore in bed was Chanel No 5?
7. What is the main ingredient of the Greek specialty baklava?
8. Which US president had a father who was ambassador to Great Britain?
9. At the start of the TV series Breaking Bad, what is the profession of Walter White?
10. In the Cricket World Cup, each team faces a maximum of how many overs in a match?

E	P	Y
I	S	S
P	A	D

How many words of four letters or more can you make from this Nonagram? Each word must use the central letter, and each letter may be used only once. At least one word using all nine letters can be found.

Guidelines:
15 Good; 18 Very Good;
21 Excellent.

Any word found in the Concise Oxford Dictionary (Tenth Edition) is eligible with the following exceptions: proper nouns; plural nouns, pronouns and possessives; third person singular verbs; hyphenated words; contractions and abbreviations; vulgar slang words; variant spellings of the same word (where another variant is also eligible).

Spell out a 15-letter word or phrase by moving from one chamber to another within the pyramid. You may only enter each of the chambers once and may only proceed through openings in the walls. The first letter may appear in any chamber.

PV	AO	LS	EU	RE
EA		HI		EB
TP	OW	EL	RI	OP
IA		AE		NE
DL	AE	CP	EO	LY

Here are two miniature five-square crosswords using the same grid – but the letters have been mixed up. You have to work out which letters belong to which crossword.

1		2		3		4			5	6		7
8									9			
11					12		13					
	14	15										
16												17
18						19				20		
21					22	23						
24					25							

1. Help backward race suffering bitter attack (8)
5. Analyse the image (4)
8. Fortunate to have been regarded with goodwill (8)
9. Fast time (4)
11. Cathy in trouble with another woman (7)
13. I have been taken in by flower girl (5)
14. Does he make plans for one playing on board? (11)
18. Thought about us getting in the sea shortly (5)
19. Oscar leaves poor non-achievers in ancient capital (7)
21. Plunder nothing in a large quantity (4)
22. Fellow givin' out a musical instrument (8)
24. Rite performed in row (4)
25. After drama met a potential child's companion (8)

1. Leave the country, there's something wrong (6)
2. Learner taken in by awfully vain man (5)
3. It gives some indication about the unrefined girl in blue (5,5)
4. Some describe enterprising worker (3)
6. Church takes on new lease in London (7)
7. Catch the girl below (6)
9. Currently it's the time when Santa comes (7-3)
12. Wooden pale (5)
15. Repair shop again first (7)
16. Slipper at extremes of charm (6)
17. Risk of not completing part of the church (6)
20. House the football team (5)
23. Be unwell as a result of drink, we hear (3)

Easy Each row and each column must contain the numbers 1 to 9, and so must each 3 x 3 box. **Hard**

8		5				1		
		4	9					
9			1	2	7			4
				1	2	5		3
3		2		8		6	1	7
4	7			3				8
	8		2	4		3	9	5
2			5	7				
5	4		8					

				1		2		
	7			2		1	8	
			7		6			4
	2					7		
6			1			8	5	
	9						4	
		3		4		6		
		9		5	3			
4		8			2			

$$\begin{array}{ccccc} & 12 & & 3 & \\ 7 & \bigcirc & 2 & \bigcirc & 1 \\ & 2 & & 1 & \\ 3 & \bigcirc & 3 & \bigcirc & 4 \\ & 2 & & 2 & \end{array}$$

Place the four signs (add, subtract, multiply, divide) one in each circle so that the total of each across and down line is the same.

Perform the first calculation in each line first and ignore the mathematical law which says you should always perform division and multiplication before addition and subtraction.

This puzzle page is supplied by
Sirius Media Services Ltd.

To try our new puzzle,
Zygolex, go to

www.zygolex.com

© Sirius Media Services Ltd



1	2		3		4		5		6		7	
						8						
9									10			
11		12				13		14		15		16
17					18							
				19								
20	21		22				23		24			
25						26						
					27						28	
29					30							
			31									
32					33							

1. Spring flower (8)
6. Waistband (4)
8. Pixie (3)
9. Trespasser (8)
10. Floating platform (4)
12. Effluent drain (5)
14. Not active (5)
17. Female deer (4)
18. Harem (8)
20. Roomy (8)
24. Painful (4)
25. Symbol (5)

29. Swine (4)
30. Qualified (8)
31. Stray (3)
32. Islamic ruler (4)
33. Equestrian sport (8)

DOWN

2. Hire (4)
3. Graded (6)
4. Masses (inf.) (6)
5. Irish republic (4)
6. Leap (6)
7. Hunting trip (6)
11. Trunk (5)

13. Brother of Romulus (5)
14. --- McKellen, English actor (3)
15. Arm joint (5)
16. Tall building (5)
19. Wicked act (3)
21. Rostrum (6)
22. Incense holder (6)
23. Figure of speech (6)
24. Sequence (6)
27. Group of cattle (4)
28. Garden pest (4)

[illegible]



The 100th Centenary Celebrations for The Hamilton-Russell Cup and the formation of the ensuing league, constituted by the London Chess Clubs, with the maxim to be competed for by, the Social, Political, Naval, and Military clubs in the West-end of London, took place at The Royal Automobile Club, Pall Mall, London, on the evening of the 10th October, and what a celebration it was! The Hon. Frederick Hamilton-Russell (1867-1941), who donated the cup and initiated the competition in 1923, was a member of The Athenaeum and The RAC clubs on Pall Mall. As a chess philanthropist, he played a major role in setting up, in 1927, the 16-nation international tournament held at Central Hall, Westminster, retrospectively labelled the first Olympiad. He also donated a cup to this event. Hungary, captained by Maroczy, secured first place, Denmark took silver, and Britain (often referred to as *The British Empire team* at the time) placed third, earning a bronze medal. Sir George Thomas, was awarded the best individual game result, tying with Holger Norman-Hansen of Denmark, both achieving 12 out of 15 points. The international importance of Frederick's engagement with the 1927 London event was recognised and welcomed by the President of the recently formed organisation FIDE (1924), Dr. A. Rueb (Holland), who was quoted in the British Chess Magazine as saying, "The cup presented by Hon. Hamilton Russell would be a great help in the development of FIDE, and he hoped to see them all again at the meeting next year of FIDE at The Hague."

Frederick married Lady Margaret Rachel Scott in 1897, who was, in her own right, an athlete, winning the British Amateur Women's Golf Championship three times and supporting women's participation in chess tournaments and other sporting engagements. She played an active role in promoting women's chess and was quoted in the February 1930 issue of 'The Chess Amateur' magazine, which referred to the 1927 London tournament as the 1st Olympiad and the first Women's World Chess Championship, won by Vera Menchik.

The Challenge

Chess notation: The FIDE 2023 Grand Swiss tournament Isle of Man observed a rest day and celebrated Halloween with the Halloween Mystery Banter Blitz tournament, featuring 8 of the top players. SuperGM Daniil Dubov emerged as the winner of the first prize of 5000 dollars, marking his second consecutive victory. Notably, the players concealed their identities by wearing Halloween masks. Dubov chose a scream mask, while the two players in this month's puzzle, Oleksandr Bortnyk and Polina Shuvalova, opted for a vampire and a crazy zombie mask, respectively.

In the puzzle, the player with the Black pieces, Crazy Zombie, executed the move 19...Qe6, skillfully connecting with her Bishop on h3 with the hope of dominating g4 and achieving checkmate on g2. Refer to the diagram for the current position. How did Vampire respond to this move?

The solution is opposite

The Chic of Chess and its Honourable Supporters

'The Chess Amateur' continued its standing ovation with, "An interesting event at the close of the 1927 event was the presentation by Lady Margaret Hamilton-Russell of the handsome gold cup, which her Ladyship had kindly gifted to FIDE as a permanent trophy for future holders of the Women's World Chess Championship. In presenting it to its first-time holder, Miss Vera Menchik was greeted with enthusiastic support by the many admirers present of her chess achievements." Every winner of the cup also received a gold medal as a personal memento, and the first six medals were promised by the Hamilton-Russells, the Right Honourable Lady and Gentleman.

The contributions to chess by Frederick and Margaret and the inauguration of the London Hamilton-Russell Cup league in 1923 constituted the fabulous celebratory dinner at The RAC on 10th October, featuring period dress in 1920's style, dancers, music, and speeches. The RAC event was a masterpiece as well, showcasing the club's enduring ability to organise the most memorable occasions befitting the auspicious history and personalities of Hamilton-Russell that it celebrated. The event was both joyous and serious, with wonderful food enjoyed by all. The RAC and its organisers for this event should be heartily congratulated for providing a most memorable, convivial, and convincing evening. I am sure that Margaret and Frederick would have been in their element had they been there; perhaps they were there in spirit.

A book perfectly suited to accompany the evening, published by The Biogs Group in 2023 and authored by Norman Britten and Danny Rosenbaum, is entitled 'The Hamilton-Russell Cup,' subtitled '100 Years of Convivial Chess and the Man Behind It.' This book provides a detailed account of the life of Hon. Frederick Hamilton Russell and his wife Lady Margaret Rachel Scott, who were married in 1897 and passed away in 1941 and 1938, respectively. Frederick served as President of The British Chess Federation until his death in 1941. The book is a treasure trove of facts and figures about British chess and how it prospered and developed with the involvement of the Hamilton-Russells, inspiring others to become benefactors, a tradition that

continues to this day. The book has an introduction by the 11th Viscount Boyne, whose great-great-uncle was Frederick Hamilton Russell himself. Even art played a role in 1939 when Frederick presented a gift to The National Portrait Gallery, London, an oil painting titled 'Chess Players' by Anthony Rosenbaum (no relation to the co-author of this book), painted between 1874-1880. The painting depicted 47 senior chess players of the time, including William Steinitz, the first official World Champion (1886-1894), J.H. Blackburne, B. Horwitz, S. Tinsley, Paul Morphy, and A. Anderssen, among others. Frederick's patronage to chess was well-intentioned, and this gift to the nation, displayed in the centre of London, was expected to promote chess. 'Chess Magazine,' in its November 1941 issue, carried an obituary for the great man, stating, "He was one of the most powerful and enthusiastic patrons the game of chess ever had; the trophy competed for in the various International Team Tournaments is the Hamilton-Russell Cup, and it will perpetuate his name for decades to come." And so it has! The book 'The Hamilton-Russell Cup' with ISBN 978-0-95595-40-2-3 by C. Norman Britten and Danny Rosenbaum is available from Chess and Bridge. Lastly, a huge thanks to the RAC Chess Circle,

Henry McWatters, Stephen Meyler, Norman Britten, Danny Rosenbaum, and others who organised the October Centenary celebrations, the management and catering at The RAC, the dancers, retro musical performances, and the gravelly voice of Jason Kouchak.

Barry Martin

The Solution

Vampire's response was 20. Qh6, unleashing a powerful threat on g7, which is difficult for Black to defend. 20. f3!..., best move leaving two of White's pieces en prise! 20....Bf5? (20....Bxf1, the only move with White still better). 21. Bxg5!;Nh7. 22. Bxf6,Qxf6. 23. Rg1+,... 24. Qxf6+Nxf6. 25....Re3. 26. Rafl,Nxh5. 27.Rg4,Ng7. 28.Rh4+Kf8. 29.Rg1,Re7. 30.Bh7+Kf8. 31.Bd3,Kg8. 32.Bh7+Kf8. 33.Bc2,Kg8. 34.Bb3,Rae8. 35.Rhg4+... 1-0.

PULLMAN EDITIONS ART DECO POSTERS



Limited to editions of 280, our newly-commissioned Art Deco posters feature glamorous holiday destinations around the world, ski resorts in the European Alps, and the world's greatest historic automobiles. Over 100 designs to choose from, all printed on 100% cotton fine art paper, measuring 97 x 65 cms. Priced at £420 each (inc. UK sales tax). Private commissions are also welcome.

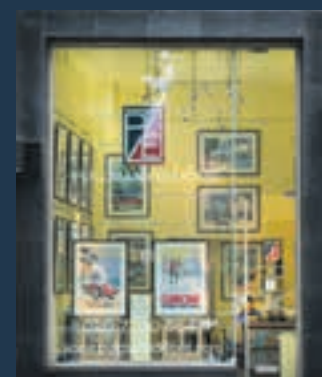
 @pullmaneditionsposters

All images and text copyright © Pullman Editions 2023



Pullman Editions
94 Pimlico Road
Chelsea
London SW1W 8PL

+44 (0)20 7730 0547
info@pullmaneditions.com



Our central London gallery

View and buy online at www.pullmaneditions.com